

HIGH-TECH FLOOR JOINT PROFILES

FOR INDUSTRY, PRODUCTION
FACILITIES, HOSPITALS,
WAREHOUSES...

- ◆ heavy duty
- ◆ multiple grinding (driving comfort)
- ◆ simple installation
- ◆ low installation height
- ◆ metal-free, therefore cannot corrode
- ◆ prefabricated

FloorBridge® 

ON SOFT AND SMOOTH SOLES!

FloorBridge® Joint Profiles – The perfect and permanent solution for floor joints

In industrial areas, floor joints are subjected to heavy duties when driven over with Materials Handling Equipment (MHE), such as forklifts.

If the built-in floor profiles are not absolutely flat, in addition to noise, extreme impact is also created on the wheel bearings and last but not least on the backs of the forklift drivers.

High stress on man and machine is the result, which often leads to the sickness of the affected employees and expensive repairs to forklifts.

The FloorBridge® Joint Profile in carbon fiber composite technology is the ideal solution for both, new construction projects and during refurbishment. The installation is carried out with little effort and within a very short time period, ensuring that a low-noise and a low-vibration crossing with all conceivable transport equipment becomes possible, from the patient trolley to the sophisticated VNA-forklift.

As the FloorBridge® Joint Profile can be grinded several times, it can be optimally adapted to the existing floor levels, creating a permanent solution for previously experienced joint problems.

Owing to its metal-free properties and its high chemical resistance, the FloorBridge® – Joint Profiles are of course rust-free and have a high chemical resistance.

Besides the simplicity of its installation, another key feature is the low installation height which makes the FloorBridge® – Joint Profiles ready to take traffic after only a few hours.

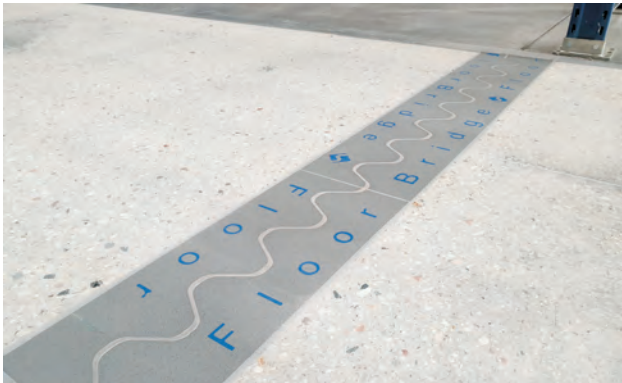
A real novelty of the FloorBridge® – Joint Profiles is the range of colour designs with floor coatings to suit individual customer requirements.



- perfect permanent solution for joint problems
- can be grinded several times
- metal-free, therefore rust-free
- suitable for heavy duty traffic
- optimum coating connection due to recessed connection flange
- individual color design
- high driving comfort with reduced cost on MHE's
- back-friendly solution for forklift drivers
- proven higher reliability and longer service life of the MHE's (forklifts, lift trucks, etc.)
- can be driven on after a few hours - in all areas during ongoing operations
- prefabricated
- fast delivery, stock item



The benefits need to be seen to be believed!



FloorBridge® WGX 20/50

PROFILE DESCRIPTION

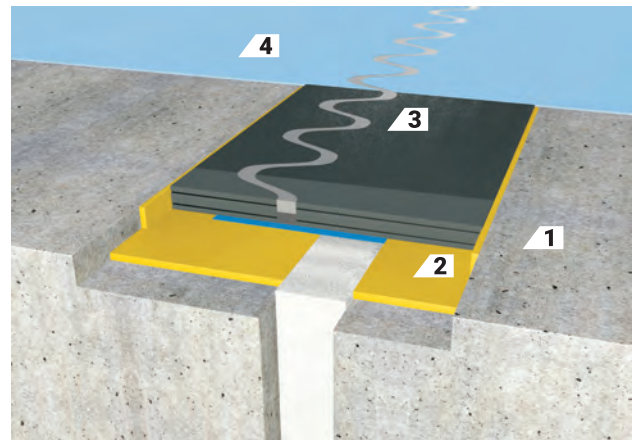
The FloorBridge® Joint Profile WGX 20/50 is a prefabricated polymer floor joint profile in carbon fiber composite technology with high mechanical strength. Its wave-shaped joint profile design allows for improved load distribution, resulting in minimized vibrations under traffic loads (forklift, car, truck, hospital trolley, etc.). The joint profile is suitable for an existing floor joint width of up to 50mm. A water-tight connection to coatings, concrete or asphalt can be achieved.

FIELDS OF APPLICATION

Joint profile for new constructions and for the refurbishment of floor joints in warehouse facilities and high-rack warehouses, industrial buildings, production facilities, shopping centers, supermarkets, hospitals and laboratories as well as in the pharmaceutical and food industry.

FEATURES / ADVANTAGES

- can be grinded several times
- can take heavy load traffic
- hardly noticeable vibrations under traffic with cars or MHE's (i.e. forklifts)
- back-friendly for forklift drivers
- high driving comfort
- reduced MHE-cost (wheel bearings, tyres, etc.)
- similar coefficient of thermal expansion as with reactive resin floors
- a seamless and tight coating connection can be achieved
- low installation height
- simple installation
- high chemical resistance
- food safe
- temperature- and weather resistant
- partial, fast repair possible
- metal-free, therefore cannot corrode
- special rapid application can be driven on after a few hours



1 Concrete floor slab

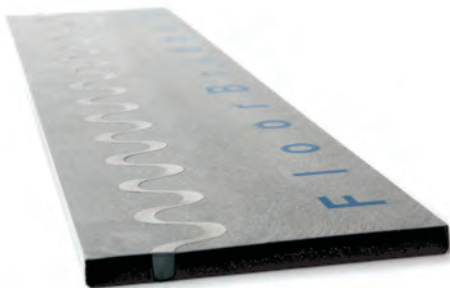
2 Structural adhesive

3 Coating

4 Joint profile WGX 20/50

TECHNICAL DATA

Width of joint profile:	approx. 255 mm
Length of joint profile:	approx. 1200 mm installed (1195 mm net)
Thickness of joint profile:	approx. 20 mm
Joint width in the substrate:	max. 50 mm
Contamination seal:	approx. 15 mm (depending on design variation)
Total horizontal joint movement:	30 mm (-10/+20 mm)
Grinding depth:	max. 2 mm
Compressive strength:	80 N/mm ² (ONR 23303)
Tensile bending strength:	60 N/mm ² (DIN EN 196-1)
Load:	Wheel Load 6,000 kg per 10 cm ² supporting area



FloorBridge[®] RC 20/30

PROFILE DESCRIPTION

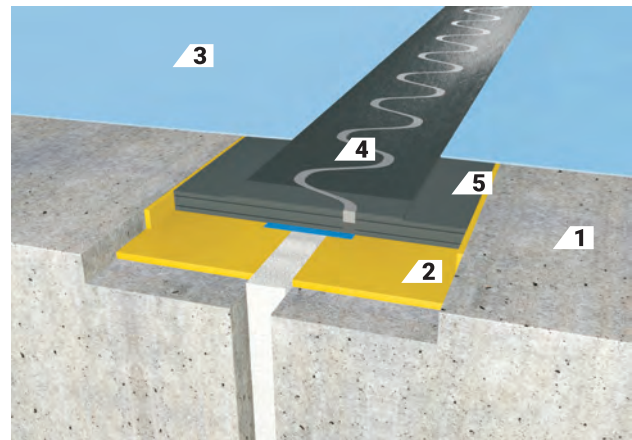
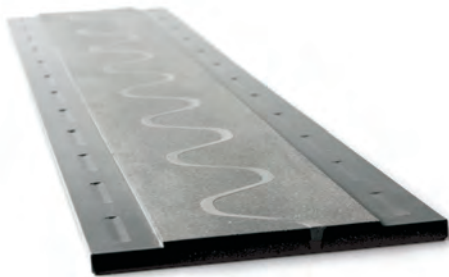
The FloorBridge[®] Joint Profile RC 20/30 is a prefabricated polymer floor joint profile in carbon fiber composite technology with coating flange. Its wave-shaped joint profile design allows an improved load distribution, resulting in minimized vibrations under traffic loads (forklift, car, truck, hospital trolley, etc.). The joint profile is equipped with a recessed coating flange along both sides, allowing for a perfectly seamless coating connection in this transition area.

FIELDS OF APPLICATION

Joint profile for new constructions and for the refurbishment of floor joints in the pharma- and food industry, warehouse facilities and high-rack warehouses, industrial buildings, production facilities (car manufacturing, etc.), multi-storey and basement car parks, shopping centers and super-markets, hospitals and laboratories, event centers and schools.

FEATURES / ADVANTAGES

- high chemical resistance
- food safe
- similar coefficient of thermal expansion as with reactive resin floors
- a water-tight application can be achieved
- perfectly seamless coating connection due to a recessed coating flange
- hardly noticeable vibrations under traffic with cars or MHE's (i.e. forklifts)
- back-friendly for forklift drivers
- high driving comfort
- reduced MHE-cost (wheel bearings, tyres, etc.)
- low installation height, simple installation
- partial, fast repair possible
- metal-free, therefore cannot corrode
- special rapid application can be driven on after a few hours



- 1 Concrete floor slab
- 2 Structural adhesive
- 3 Coating
- 4 Joint profile RC 20/30
- 5 Recessed coating flange

TECHNICAL DATA

Width of joint profile:	approx. 250 mm
Length of joint profile:	approx. 1200 mm installed (1195 mm net)
Thickness of joint profile:	approx. 20 mm
Joint width in the substrate:	max. 30 mm
Contamination seal:	approx. 10 mm (depending on design variation)
Total horizontal joint movement:	25 mm (-5/+20 mm)
Grinding depth:	max. 2 mm
Compressive strength:	80 N/mm ² (ONR 23303)
Tensile bending strength:	60 N/mm ² (DIN EN 196-1)
Load:	Wheel Load 6,000 kg per 10 cm ² supporting area



FloorBridge® ST 20/30

PROFILE DESCRIPTION

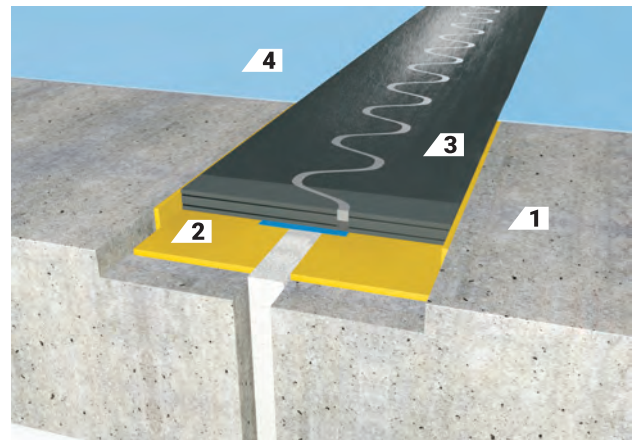
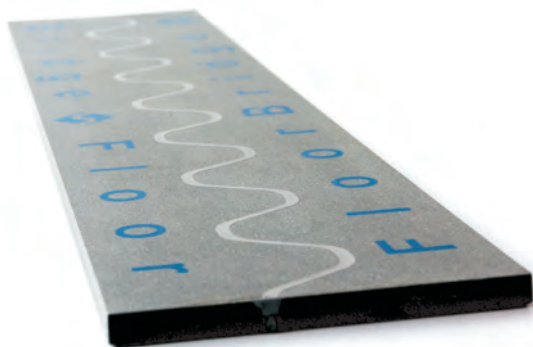
The FloorBridge® Joint Profile ST 20/30 is a prefabricated polymer floor joint profile in carbon fiber composite technology. The sinus-shape of the joint profile allows an optimized load distribution together with low vibration joint crossings under wheel traffic.

FIELDS OF APPLICATION

Joint profile for new constructions and for the refurbishment of floor joints in warehouse facilities and high-rack warehouses, industrial buildings, car manufacturers and part suppliers, production facilities, multi-storey and basement car parks, shopping center, super-markets, hospitals and laboratories, event centers and schools, pharma industry (production and distribution), food industry (production and distribution).

FEATURES / ADVANTAGES

- can be grinded several times
- can take heavy load traffic
- hardly noticeable vibrations under traffic with cars or MHE's (i.e. forklifts)
- back-friendly for forklift drivers (high in driving comfort)
- reduced MHE-cost (wheel bearings, tyres, etc.)
- similar coefficient of thermal expansion as with reactive resin floors
- a seamless and tight coating connection can be achieved
- low installation height
- simple installation
- high chemical resistance
- food safe
- temperature- and weather resistant
- partial, fast repair possible
- metal-free, therefore cannot corrode
- special rapid application can be driven on after a few hours



- 1 Concrete floor slab
- 2 Structural adhesive
- 3 Joint profile ST 20/30
- 4 Coating

TECHNICAL DATA

Width of joint profile:	approx. 250 mm
Length of joint profile:	approx. 1200 mm installed (1195 mm net)
Thickness of joint profile:	approx. 20 mm
Joint width in the substrate:	max. 30 mm
Contamination seal:	approx. 10 mm (depending on design variation)
Total horizontal joint movement:	25 mm (-5/+20 mm)
Grinding depth:	max. 2 mm
Compressive strength:	80 N/mm ² (ONR 23303)
Tensile bending strength:	60 N/mm ² (DIN EN 196-1)
Load:	Wheel Load 6,000 kg per 10 cm ² supporting area



FloorBridge® SL 15/08

BESCHREIBUNG DES PROFILS

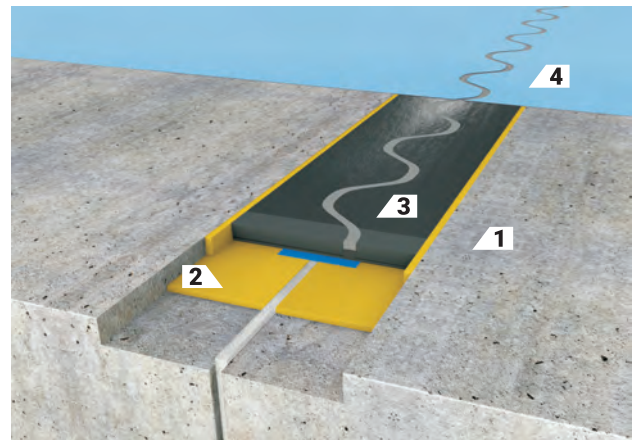
Das FloorBridge® Fugenprofil SL 15/08 ist ein vorgefertigtes Polymer-Bodenfugenprofil in Carbonfaser-Verbundbauweise für schmale Fugen.

EINSATZBEREICH

Fugenprofil für den Neubau und die Sanierung von Fugen wie z.B.: Parkhäuser, Parkdecks, Lager- und Montagehallen, Werkstätten, Krankenhäuser, Schulen und Industriehallen

MERKMALE / VORTEILE

- metallfrei – daher nicht korrosiv
- einfacher Einbau
- geringe Einbauhöhe
- temperatur- und witterungsbeständig
- PKW- und LKW-befahrbar
- nach wenigen Stunden befahrbar



- 1 Concrete floor slab 2 Structural adhesive
3 Joint profile SL 15/08 4 Coating

TECHNISCHE DATEN

Fugenprofilbreite:	zirka 130 mm
Fugenprofillänge:	zirka 1200 mm eingebaut (1195 mm netto)
Fugenprofilldicke:	zirka 15 mm
Fugenbreite im Untergrund:	max. 8 mm
Schmutzbremse:	zirka 10 mm (je nach Ausführungsvariante)
Fugenbewegung horizontal gesamt:	8 mm (-3/+5 mm)
Druckfestigkeit:	60 N/mm ² (ONR 23303)
Biegezugfestigkeit:	50 N/mm ² (DIN EN 196-1)
Belastung:	Radlast 5000 kg pro 10 cm ² Auflagefläche



FloorBridge® SL 15/05

PROFILE DESCRIPTION

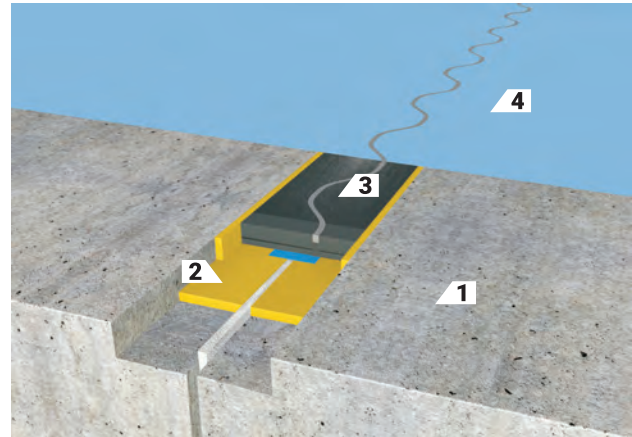
The FloorBridge® Joint Profile SL 15/05 is a prefabricated polymer floor joint profile in carbon fiber composite technology for the treatment of floor cracks and shrinkage joints / saw cuts.

FIELDS OF APPLICATION

Joint profile for new constructions and for the refurbishment of floor joints for example in multi-storey car parks and park decks, warehouse areas, assembly halls, workshops, hospitals, schools, industrial buildings, etc.

FEATURES / ADVANTAGES

- metal-free - therefore cannot corrode
- simple installation
- low installation height
- temperature - and weather resistant
- can take car and truck traffic
- can be driven on after a few hours



- 1 Concrete floor slab
- 2 Structural adhesive
- 3 Joint profile SL 15/05
- 4 Coating

TECHNICAL DATA

Width of joint profile:	approx. 80mm
Length of joint profile:	approx. 1200mm installed (1195 mm net)
Thickness of joint profile:	approx. 15mm
Joint width in the substrate:	max. 5mm
Contamination seal:	approx. 5mm (depending on model)

Total horizontal joint movement:	5 mm (-2/+3 mm)
Compressive strength:	60 N/mm ² (ONR 23303)
Tensile bending strength:	50 N/mm ² (DIN EN 196-1)
Load:	Wheel Load 6,000 kg per 10 cm ² supporting area

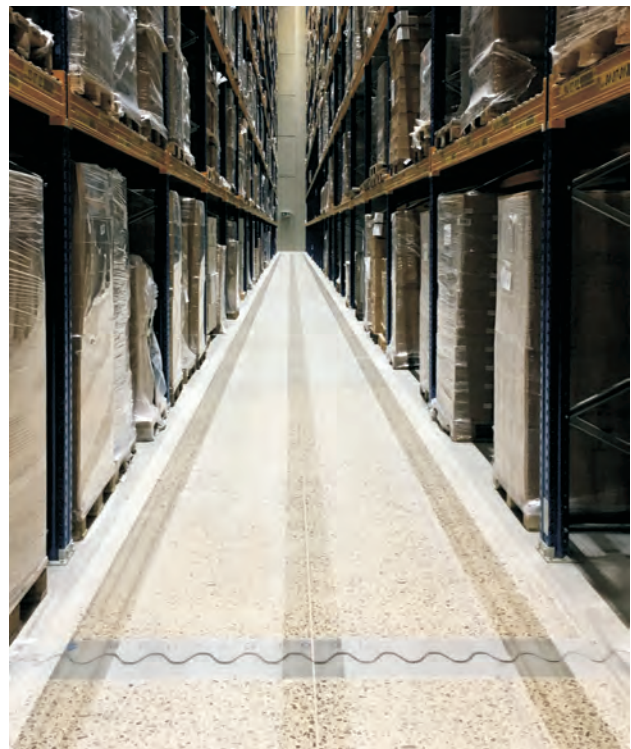
FloorBridge® ST 30/30 Joint profile with greater grinding depth

PROFILE DESCRIPTION

This joint profile was specially developed for use in high-bay warehouses, in these areas a large grinding depth is required.

FIELDS OF APPLICATION

Joint profile for new construction and the renovation of joints in high-bay warehouses.



FloorBridge® JOINT PROFILES FOR SPECIFIC APPLICATIONS

FloorBridge® AC 20/30 for air - cushion vehicles

PROFILE DESCRIPTION

The FloorBridge® Joint Profile AC 20/30 is a prefabricated polymer floor joint profile in carbon fiber composite technology. Due to a special joint detailing, air-cushion vehicles can be driven over joints smoothly and trouble-free.

FIELDS OF APPLICATION

Joint profile for new constructions and for the refurbishment of floor joints in areas, where air-cushion vehicles operate.



FloorBridge® ST 30/30 Terrazzo

PROFILE DESCRIPTION

The FloorBridge® Joint Profile ST 30/30 is a prefabricated polymer floor joint profile in carbon fiber composite technology. During production a special aggregate is added, achieving a Terrazzo-effect, following the diamond grinding process.

FIELDS OF APPLICATION

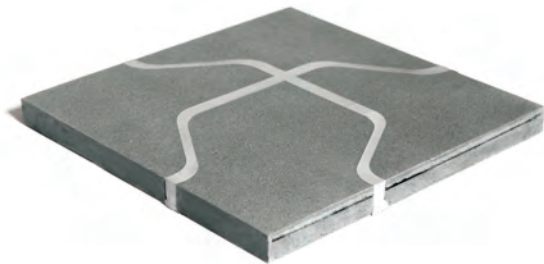
Joint profile for new constructions and for the refurbishment of floor joints, for example in warehouses and assembly halls, workshops, hospitals, schools and industrial buildings, etc.



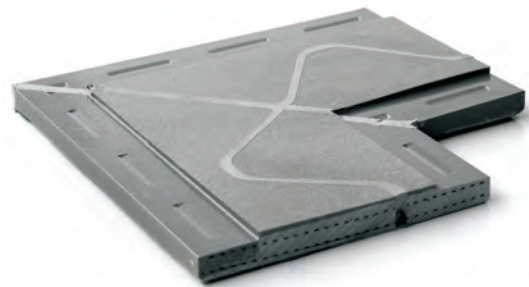
FloorBridge® – MOULDED PARTS

The right detailed solution for all requirements

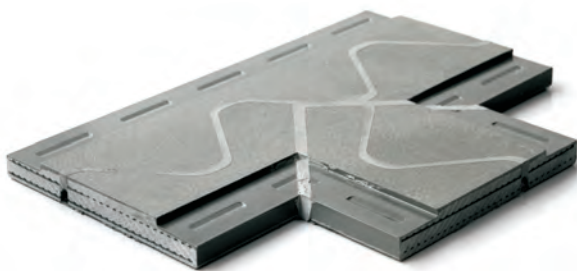
There are various **moulded parts** available for **joint - crossings, wall connections and other details**, which can be ordered from FloorBridge® to meet project specific design requirements.



Uni-shaped part for ST 20/30
article No. 23



RC L-shaped part – article No. 88
WGX L-shaped part – article No. 27

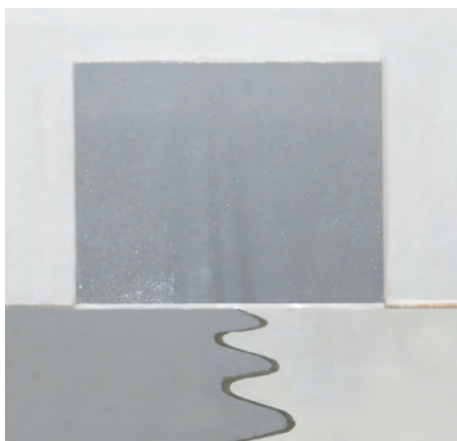


RC T-shaped part – article No. 89
WGX T-shaped part – article No. 28



RC Cross-shaped part – article No. 64
WGX Cross-shaped part – article No. 29

FloorBridge® **WALL PLATE** (24 x 20 cm)
article No. WP



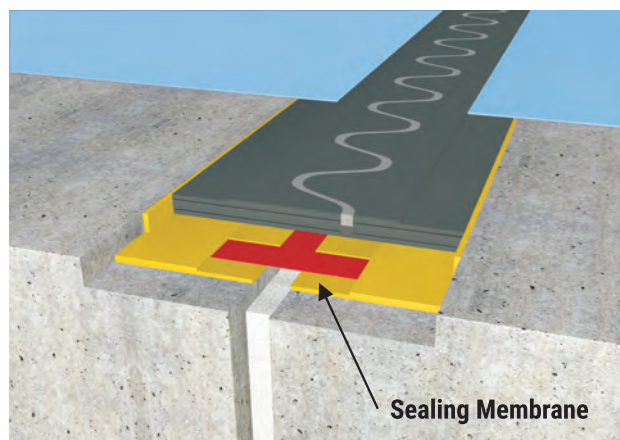
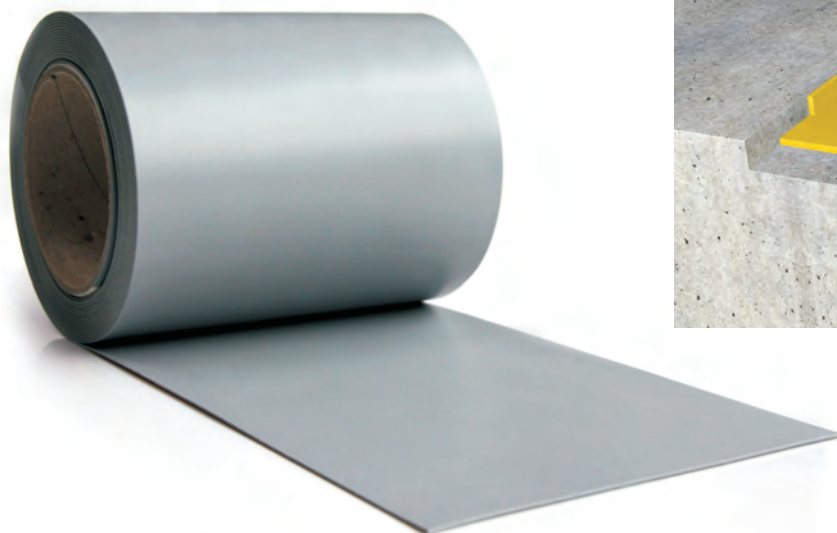
Adhesive FloorBridge® Connect 01 / 03
9 kg – article No. 35
30 kg – article No. 122 / article No. 34



ACCESSORIES / OTHER PRODUCTS

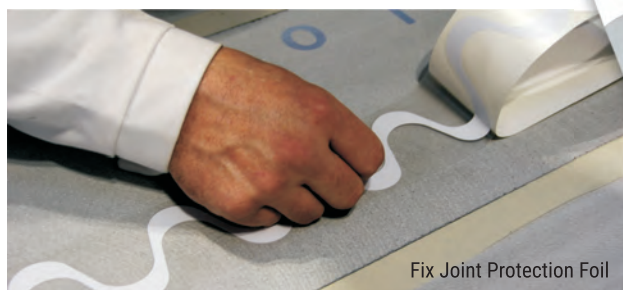
Sealing membrane (roll 40 m)

SM 150 – article No. 33

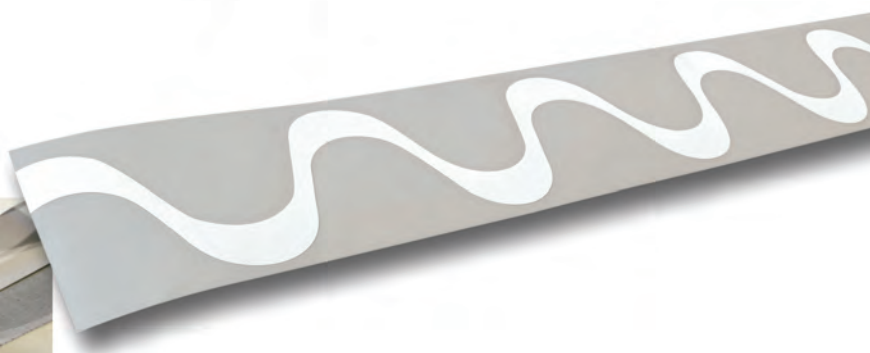


High-performance Sealing Membrane made from modified thermo-plastic elastomer for sealing exterior and interior expansion-, movement- and shrinkage joints.

Joint Protection Foil for WGX, ST, SL, AC and RC Profile



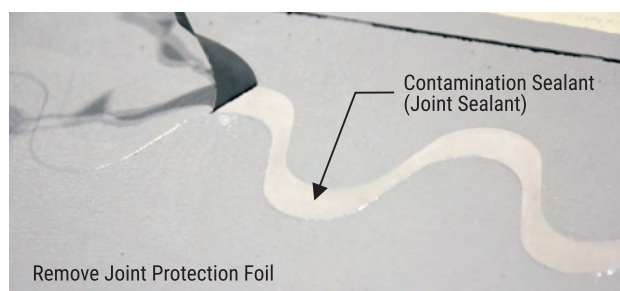
Fix Joint Protection Foil



Joint Profile Protection Foil – this ensures, that the contamination sealant remains fully functional and therefore stays elastic following sealer/coating application.



Sealing of the Joint Profile



Contamination Sealant (Joint Sealant)

Remove Joint Protection Foil

Trowel FloorBridge® SP 04 universal
article No. 37





FloorBridge®

HEAD OFFICE

FloorBridge® International GmbH
Gewerbepark 21
4101 Feldkirchen an der Donau
Austria
T: +43 7233 20 030
E: office@floorbridge.com
W: www.floorbridge.com

