

# FloorBridge®



Carbon Composite Joint Profiles



**Floor Joint Profiles  
for industry & trade  
and car park buildings**



# Carbon Composite Technology - patented worldwide Highest compatibility with concrete and coating

Uneven and leaking floor joints in warehouses, production halls or hospitals cause noise and impact loads on the wheel bearings of industrial trucks. This leads to high repair costs in the long run. Today, floor joints in industrial floors must be able to be driven over with low vibration, must be mechanically highly resilient, hygienically tight, and free in design. FloorBridge® floor joint profiles in carbon composite technology are the only ones to meet these requirements.

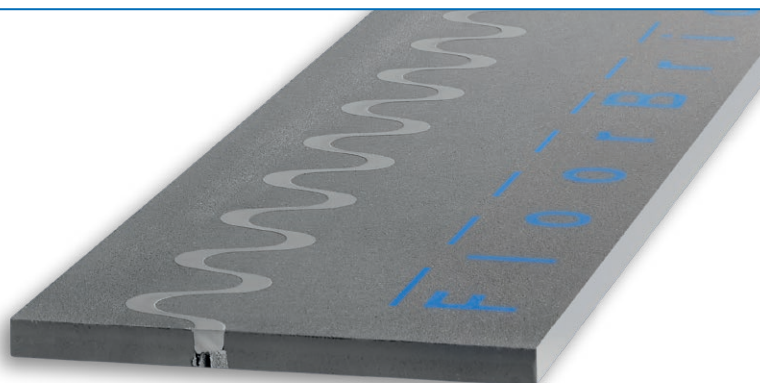
The founders of FloorBridge® and their team have drawn on decades of experience to develop carbon composite profiles that offer the highest compatibility with concrete and coatings, they are probably the most durable solution for floor joints.

For more than 10 years, certified partners have installed countless meters of profiles laid permanently tight and low-vibration traversable.

- **HIGHLY LOADABLE**  
From pedestrian to heavy loads.
- **LONG SERVICE LIFE & LOW MAINTENANCE COSTS**
- **LOW-VIBRATION DRIVE-OVER**  
Profiles that are level with the floor can be driven over with low vibration. This significantly reduces maintenance costs for industrial trucks.
- **MULTIPLE GRINDING**  
Carbon Composite Profiles can be grinded several times, can be adapted to any existing floor and can be overcoated.
- **WATERPROOF**  
Due to the tested tight coating connection, FloorBridge® joint profiles are available in a waterproof design.
- **EASY INSTALLATION & LOW INSTALLATION HEIGHT**  
The prefabricated FloorBridge® joint profiles can be installed quickly and easily. The low installation height makes it ideal for new construction and renovation.
- **INDIVIDUAL COLOR DESIGN**  
The profiles can be coated as desired and thus fit perfectly into your color concept.



The **FloorBridge® WGX 20/50** is a prefabricated carbon composite floor joint profile with an off-center sine curve and is suitable for horizontal joint movements. This allows particularly wide joints - up to 50 mm in the substrate - to be completely bridged.



### TECHNICAL SPECIFICATION

Width of joint profile	approx. 255 mm
Length of joint profile	approx. 1.200 mm installed (1.195 mm net)
Thickness of joint profile	approx. 20 mm
Joint width in substrate	max. 50 mm
Contamination seal	approx. 15 mm (depending on the version)
Total horizontal joint movement	30 mm (-10/+20 mm)
Operating temperature range	-25°C to a maximum of +40°C (if lower or higher temperatures consult the technical department)
Grindable	max. 2 mm
Compressive strength	80 N/mm <sup>2</sup> (ONR 23303)
Load	corresponds to forklift class FL6 - axle load 170 kN (DIN EN 1991-1-1)
Fire classification	Bfl-s1 (hardly inflammable)
Colour	grey
Packaging (euro-pallet)	84 pcs. à 1,20 m (100,8 m)

### FIELDS OF APPLICATION

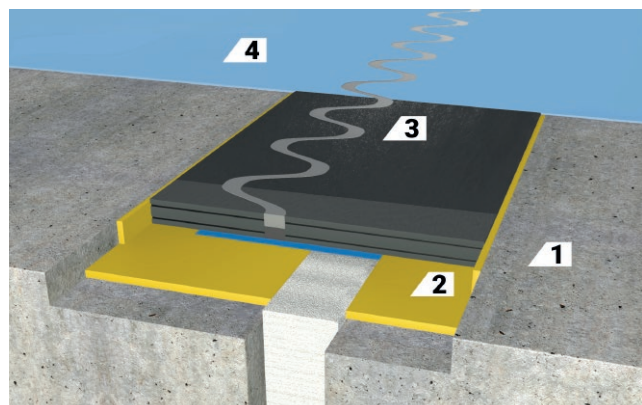
- Warehouses and high-bay warehouses
- Industrial buildings
- Car manufacturers and supplier companies
- Production plants
- Shopping centers and supermarkets
- Hospitals and laboratories
- Pharmaceutical industry (production and distribution)
- Food industry (production and distribution)

### PRODUCT CHARACTERISTICS

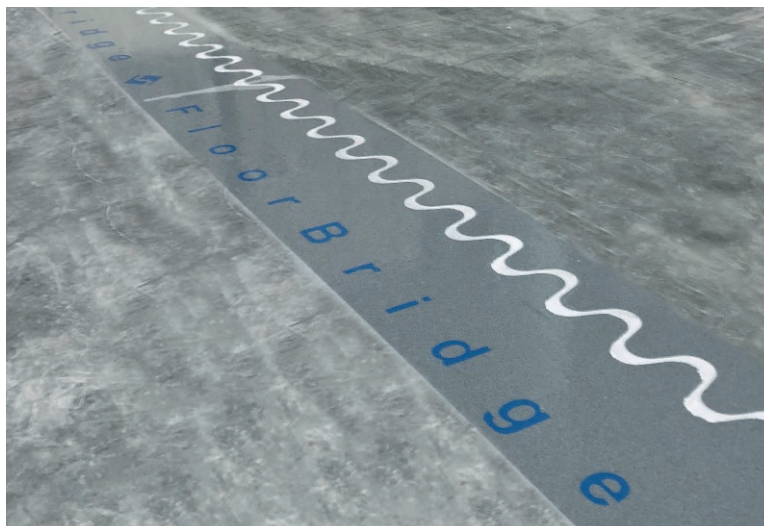
- metal free
- multiple grinding
- highly loadable
- overcoatable and free in design
- significant reduction of maintenance costs of industrial trucks
- tight coating connection possible
- easy installation
- can be driven over with low vibration

Corresponds to EU Vibration guideline 2002/44/EG (Germany: noise and vibration work safety regulation; Austria: VOLV - regulation noise and vibration)

**FloorBridge® WGX 20/50**

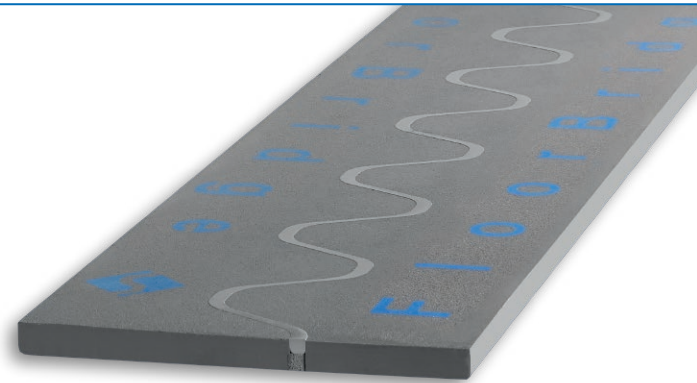


- 1 concrete  
2 adhesive  
3 joint profile WGX 20/50  
4 coating





The FloorBridge® ST 20/30 is a prefabricated carbon composite floor joint profile with a central sine curve, without coating flange and is suitable for horizontal joint movements.



#### TECHNICAL SPECIFICATION

Width of joint profile	approx. 250 mm
Length of joint profile	approx. 1.200 mm installed (1.195 mm net)
Thickness of joint profile	approx. 20 mm
Joint width in substrate	max. 30 mm
Contamination seal	approx. 10 mm (depending on the version)
Total horizontal joint movement	25 mm (-5/+20 mm)
Operating temperature range	-25°C to a maximum of +40°C (if lower or higher temperatures consult the technical department)
Grindable	max. 2 mm
Compressive strength	80 N/mm <sup>2</sup> (ONR 23303)
Load	corresponds to forklift class FL6 - axle load 170 kN (DIN EN 1991-1-1)
Fire classification	Bfl-s1 (hardly inflammable)
Colour	grey
Packaging (euro-pallet)	84 pcs. à 1,20 m (100,8 m)

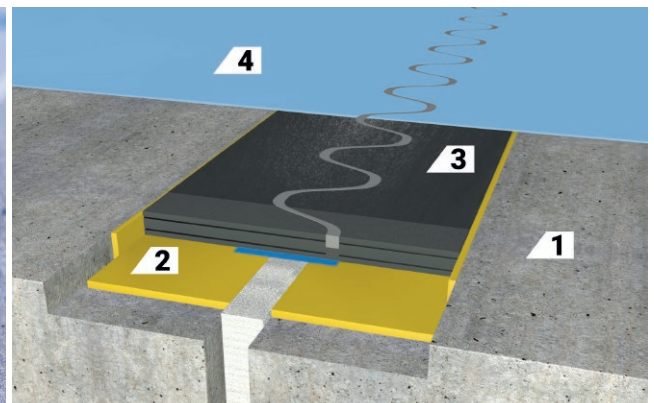
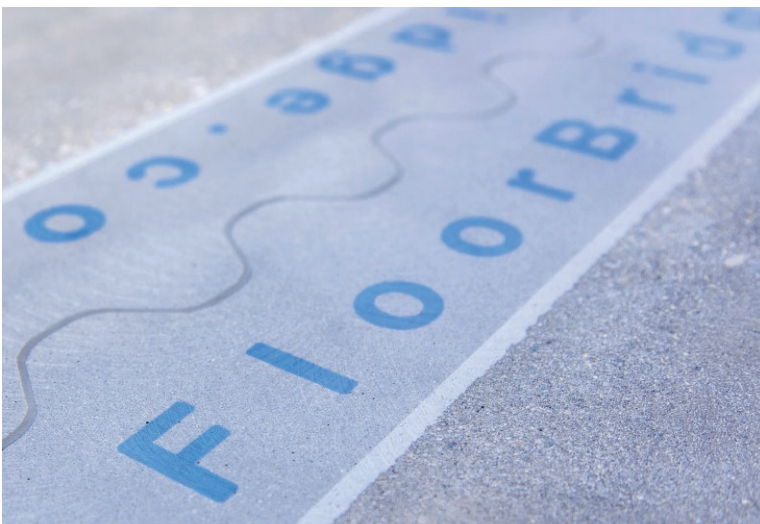
#### FIELDS OF APPLICATION

- Warehouses and high-bay warehouses
- Industrial buildings
- Car manufacturers and supplier companies
- Production plants
- Shopping centers and supermarkets
- Hospitals and laboratories
- Pharmaceutical industry (production and distribution)
- Food industry (production and distribution)

#### PRODUCT CHARACTERISTICS

- metal free
- multiple grinding
- highly loadable
- overcoatable and free in design
- significant reduction of maintenance costs of industrial trucks
- tight coating connection possible
- easy installation
- can be driven over with low vibration

Corresponds to EU Vibration guideline 2002/44/EG (Germany: noise and vibration work safety regulation; Austria: VOLV - regulation noise and vibration)



1 concrete

2 adhesive

3 joint profile ST 20/30

4 coating

**FloorBridge® SL 15/08** is a prefabricated carbon composite floor joint profile with central sine curve, without coating flange and is suitable for horizontal joint movements. Specially developed for narrow cracks and contraction joints up to max. 8 mm in the substrate.



### TECHNICAL SPECIFICATION

Width of joint profile	approx. 130mm
Length of joint profile	approx. 1.200 mm installed (1.195 mm net)
Thickness of joint profile	approx. 15 mm
Joint width in the substrate	max. 8 mm
Contamination seal	approx. 10 mm (depending on the version)
Total horizontal joint movement	8 mm (-3/+5 mm)
Operating temperature range	-25°C to a max. of +40°C (if lower or higher temperatures consult the technical department)
Grindable	max. 2 mm
Compressive strength	60 N/mm <sup>2</sup> (ONR 23303)
Load	corresponds to forklift class FL6 - axle load 170 kN (DIN EN 1991-1-1)
Fire classification	Bfl-s1 (hardly inflammable)
Colour	grey
Packaging (euro-pallet)	168 pcs. à 1,20 m (201,6 m)

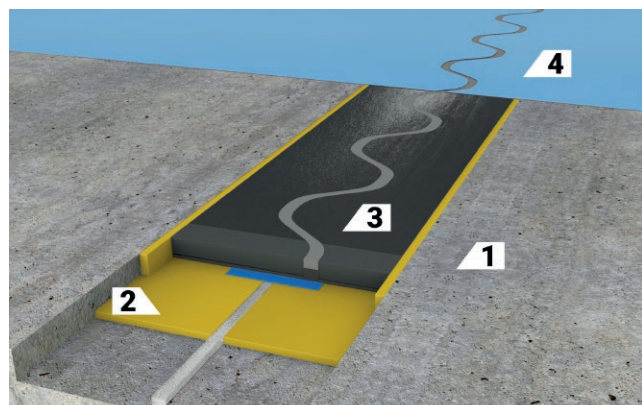
### FIELDS OF APPLICATION

- Warehouses and high-bay warehouses
- Industrial buildings
- Car manufacturers and supplier companies
- Production plants
- Shopping centers and supermarkets
- Hospitals and laboratories
- Pharmaceutical industry (production and distribution)
- Food industry (production and distribution)
- Multi-storey and basement car parks

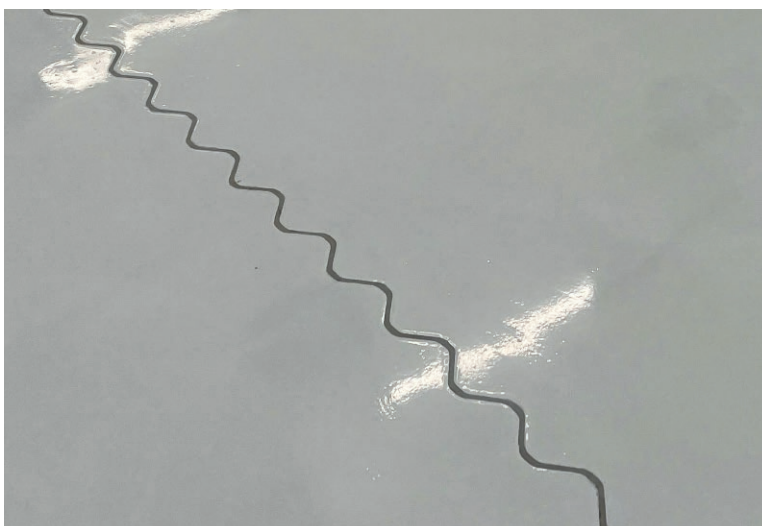
### PRODUCT CHARACTERISTICS

- metal free
- multiple grinding
- highly loadable
- overcoatable and free in design
- significant reduction of maintenance costs of industrial trucks
- tight coating connection possible
- easy installation
- can be driven over with low vibration

Corresponds to EU Vibration guideline 2002/44/EG (Germany: noise and vibration work safety regulation; Austria: VOLV - regulation noise and vibration)



- 1 concrete  
2 adhesive  
3 joint profile SL 15/08  
4 coating



**FloorBridge® SL 15/08**





FloorBridge® SL 15/05 is a prefabricated carbon composite floor joint profile with central sine curve, without coating flange and is suitable for horizontal joint movements. Specially developed for narrow cracks and contraction joints up to max. 5 mm in the substrate.



#### TECHNICAL SPECIFICATION

Length of joint profile	approx. 1.200 mm installed (1.195 mm net)
Thickness of joint profile	approx. 15 mm
Joint width in the substrate	max. 5 mm
Contamination seal	approx. 5 mm (depending on the version)
Total horizontal joint movement	5 mm (-2/+3 mm)
Operating temperature range	-25°C to a max. of +40°C (if lower or higher temperatures consult the technical department)
Grindable	max. 2 mm
Compressive strength	60 N/mm <sup>2</sup> (ONR 23303)
Load	corresponds to forklift class FL6 - axle load 170 kN (DIN EN 1991-1-1)
Fire classification	Bfl-s1 (hardly inflammable)
Colour	grey
Packaging (euro-pallet)	270 pcs. à 1,20 m (324 m)

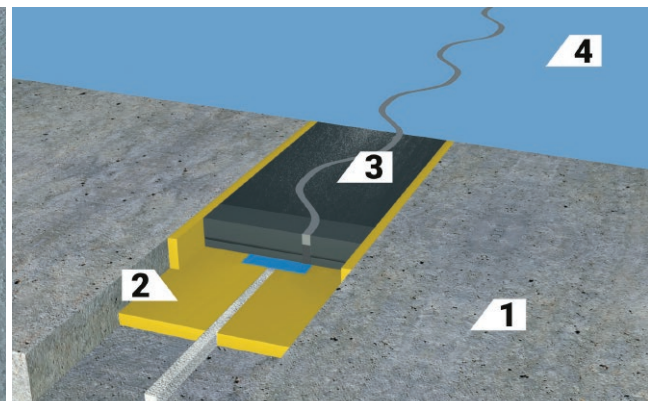
#### FIELDS OF APPLICATION

- Warehouses and high-bay warehouses
- Industrial buildings
- Car manufacturers and supplier companies
- Production plants
- Shopping centers and supermarkets
- Hospitals and laboratories
- Pharmaceutical industry (production and distribution)
- Food industry (production and distribution)

#### PRODUCT CHARACTERISTICS

- metal free
- multiple grinding
- highly loadable
- overcoatable and free in design
- significant reduction of maintenance costs of industrial trucks
- tight coating connection possible
- easy installation
- can be driven over with low vibration

Corresponds to EU Vibration guideline 2002/44/EG (Germany: noise and vibration work safety regulation; Austria: VOLV - regulation noise and vibration)



1 concrete

2 adhesive

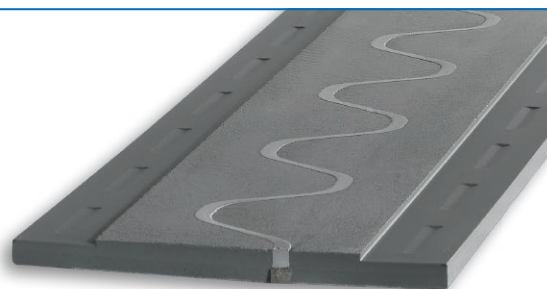
3 joint profile SL 15/05

4 coating

The **FloorBridge® RC 20/30** is a prefabricated carbon composite floor joint profile with central sine curve, coating flange on both sides and is suitable for horizontal joint movements.

#### FIELDS OF APPLICATION

- Warehouses and high-bay warehouses
- Industrial buildings
- Car manufacturers and supplier companies
- Production plants
- Shopping centers and supermarkets
- Hospitals and laboratories
- Pharmaceutical industry (production and distribution)
- Food industry (production and distribution)



Corresponds to EU Vibration guideline 2002/44/EG (Germany: noise and vibration work safety regulation; Austria: VOLV - regulation noise and vibration)

#### PRODUCT CHARACTERISTICS

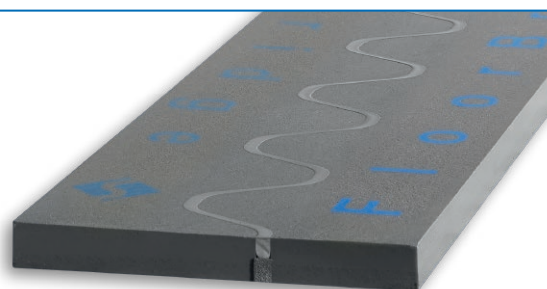
- metal free
- multiple grinding
- highly loadable
- overcoatable and free in design
- significant reduction of maintenance costs of industrial trucks
- tight coating connection possible
- easy installation
- can be driven over with low vibration



The **FloorBridge® ST 30/30** is a prefabricated carbon composite floor joint profile with central sine curve, without coating flange and is suitable for horizontal joint movements. Specially developed for use in high-bay warehouses, where an above-average grinding depth is required.

#### FIELDS OF APPLICATION

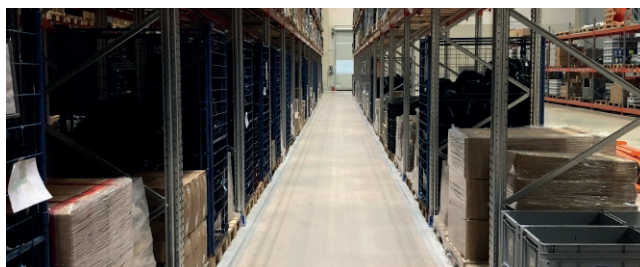
- Warehouses and high-bay warehouses
- Car manufacturers and supplier companies
- Food industry (production and distribution)



Corresponds to EU Vibration guideline 2002/44/EG (Germany: noise and vibration work safety regulation; Austria: VOLV - regulation noise and vibration)

#### PRODUCT CHARACTERISTICS

- metal free
- multiple grinding
- highly loadable
- overcoatable and free in design
- significant reduction of maintenance costs of industrial trucks
- tight coating connection possible
- easy installation
- can be driven over with low vibration



**FloorBridge® RC 20/30**



**FloorBridge® ST 30/30**

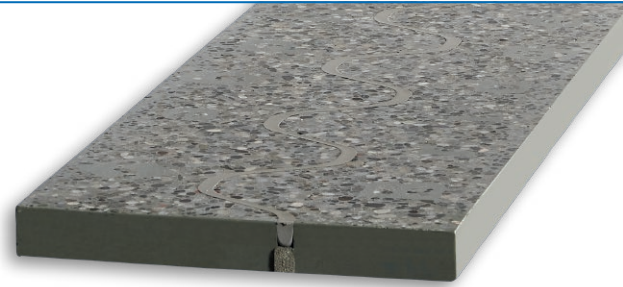
FloorBridge® ST 30/30 Terrazzo is a prefabricated carbon composite floor joint profile with a central sine curve, without coating flange and is suitable for horizontal joint movements. A special aggregate is added in the production process, creating a terrazzo effect after diamond grinding.

#### FIELDS OF APPLICATION

- Industrial buildings
- Shopping centers and supermarkets
- Hospitals and laboratories
- Pharmaceutical industry (production and distribution)
- Food industry (production and distribution)

#### PRODUCT CHARACTERISTICS

- metal free
- multiple grinding
- highly loadable
- overcoatable and free in design
- significant reduction of maintenance costs of industrial trucks
- tight coating connection possible
- easy installation
- can be driven over with low vibration



Corresponds to EU Vibration guideline 2002/44/EG (Germany: noise and vibration work safety regulation; Austria: VOLV - regulation noise and vibration)



The FloorBridge® AC 20/30 is a prefabricated carbon composite floor joint profile with central sine curve, without coating flange and is suitable for horizontal joint movements. Due to the special design & composition, it can be driven over by air cushion vehicles without any problems.

#### FIELDS OF APPLICATION

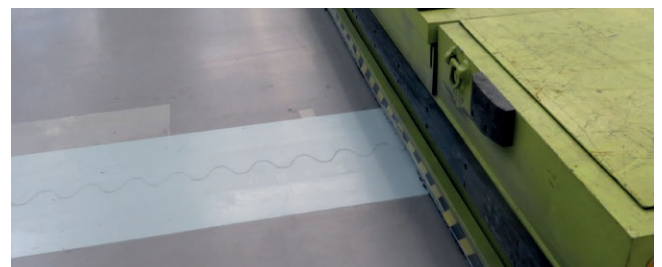
- Industrial buildings
- Car manufacturers and supplier companies
- Food industry (production and distribution)

#### PRODUCT CHARACTERISTICS

- metal free
- multiple grinding
- highly loadable
- overcoatable and free in design
- significant reduction of maintenance costs of industrial trucks
- tight coating connection possible
- easy installation
- can be driven over with low vibration

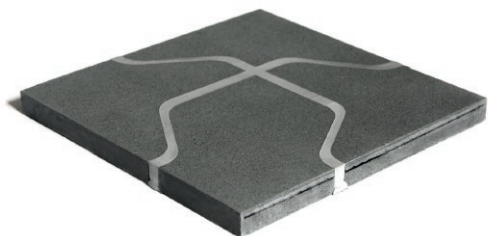


Corresponds to EU Vibration guideline 2002/44/EG (Germany: noise and vibration work safety regulation; Austria: VOLV - regulation noise and vibration)

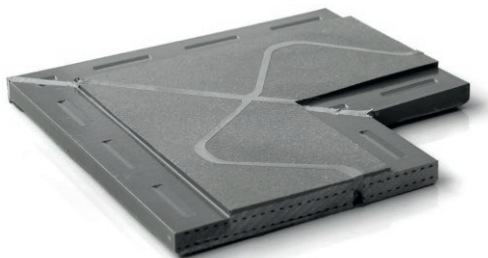




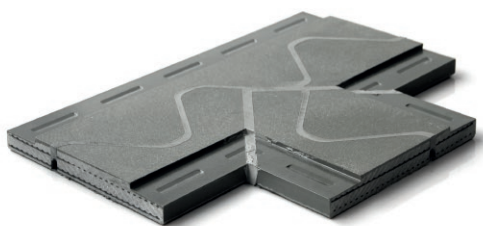
Crossings, wall connections and other moulded parts can be supplied prefabricated according to requirements. The unique, flexible system design also allows moulded parts to be made individually on each construction site.



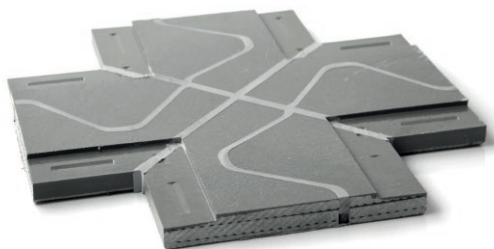
Uni-shaped part for ST 20/30, Art.No. 23



RC L-shaped part, Art.No. 91  
WGX L-shaped part, Art.No. 27  
CP L-shaped part, Art.No. 88



RC T-shaped part, Art.No. 92  
WGX T-shaped part, Art.No. 28  
CP T-shaped part, Art.No. 89



RC Cross-shaped part, Art.No. 64  
CP Cross-shaped part, Art.No. 87



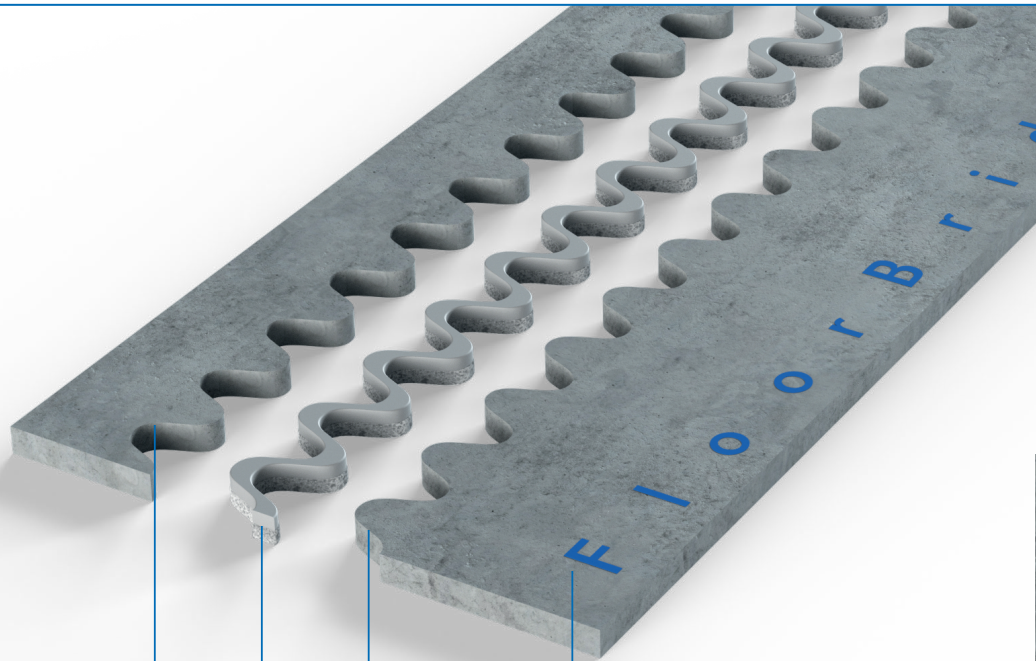
WGX Cross-shaped part, Art.No. 29



Wall plate  
24 x 20 cm, Art.No. WP  
24 x 120 cm, Art.No. WP 24x120

# Carbon Composite Technology - patented worldwide Highest compatibility with concrete and coating

---



grinding indicator

sinusoidal joint for  
low-vibration drive-over

joint filling/contamination seal

multiple grinding and overcoatable

significantly longer service life

free in design

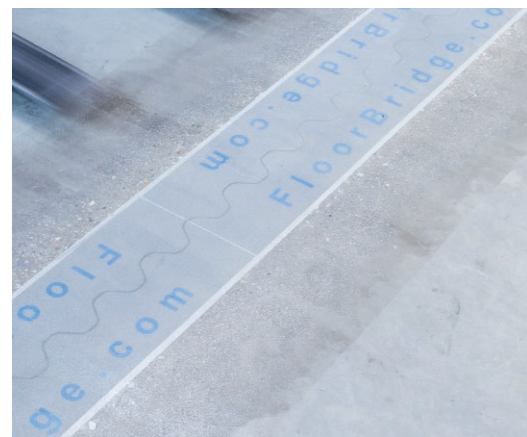
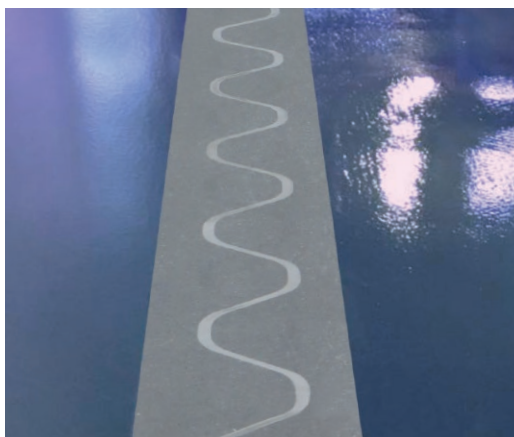
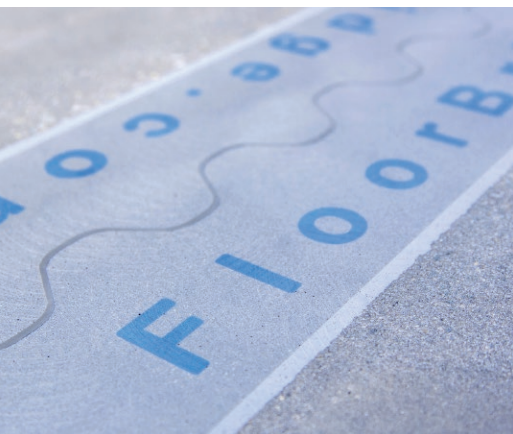
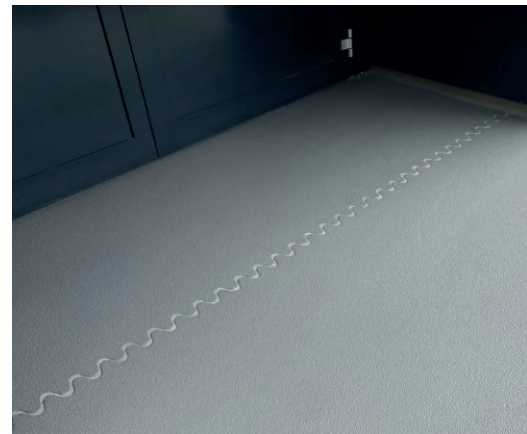
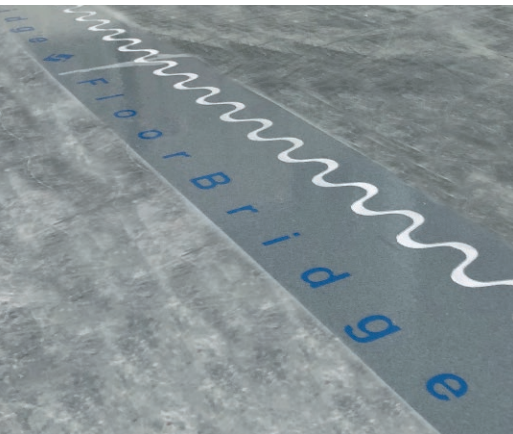
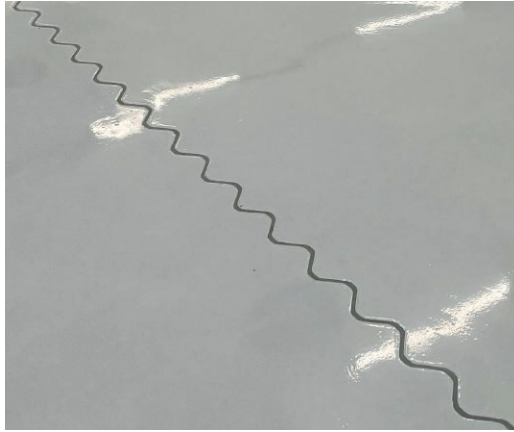
Easy installation. Standardized length.

highly loadable after a short period of time

significant reduction in maintenance costs

# Reference photos

## Industry



# Optimum protection for the statics and structure of underground car parks, multi-storey car parks and parking decks

The structure of multi-storey car parks and parking garages is exposed to enormous static and weather-related loads due to thousands of tons of weight, moisture, and de-icing salt.

Joint transition solutions play a crucial task.

Carbon composite floor joint profiles with permanently tight coating connection protect the structure in the long term.

The founders of FloorBridge® and their team have drawn on decades of experience in this industry. With the world novelty of the metal-free carbon composite technology, probably the most durable solution for floor joint profiles was created through the highest compatibility with concrete and coatings.

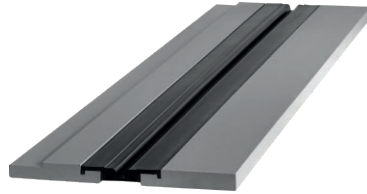
For more than 10 years, certified partners have installed countless meters of profiles laid permanently tight and low-vibration traversable.

- **WATERPROOF**  
Best protection due to tested tight coating connection and easily replaceable expansion insert.
- **HIGHLY LOADABLE**  
From pedestrian to heavy loads.
- **LONG SERVICE LIFE & LOW MAINTENANCE COSTS**
- **LOW-VIBRATION DRIVE-OVER**  
Profiles that are level with the floor can be driven over with low vibration. This reduces maintenance costs for joints and coatings.
- **EASY INSTALLATION & LOW INSTALLATION HEIGHT**  
The prefabricated FloorBridge® joint profiles can be installed quickly and easily. The low installation height makes it ideal for new construction and renovation.
- **INDIVIDUAL COLOR DESIGN**  
The profiles can be coated as desired and thus fit perfectly into your color concept.

The FloorBridge® CPS 20/50 is a prefabricated carbon composite floor joint profile with replaceable expansion insert. The product is suitable for vertical as well as horizontal joint movements and is available with or without coating flange depending on the requirements. A tested watertight connection to the adjacent coating is available.



FloorBridge® CPS 20/50 with double-sided coating connection



FloorBridge® CPS 20/50 DUO with one-sided coating connection



FloorBridge® CPS 20/50 MONO without coating connection

**TECHNICAL SPECIFICATION**

Width of joint profile	approx. 290 mm
Length of joint profile	approx. 1.200 mm installed (1.195 mm net)
Thickness of joint profile	approx. 23 mm
Joint width in substrate	max. 50 mm
Expansion insert	approx. 100 mm
Total horizontal joint movement	50 mm (-20/+30 mm)
Total vertical joint movement	30 mm (-15/+15 mm)
Load (Truck)	600 kN (DIN 1072)
Colour joint profile	grey
Colour expansion insert	black
Packaging (euro-pallet)	84 sets. à 1,20 m (100,8 m)

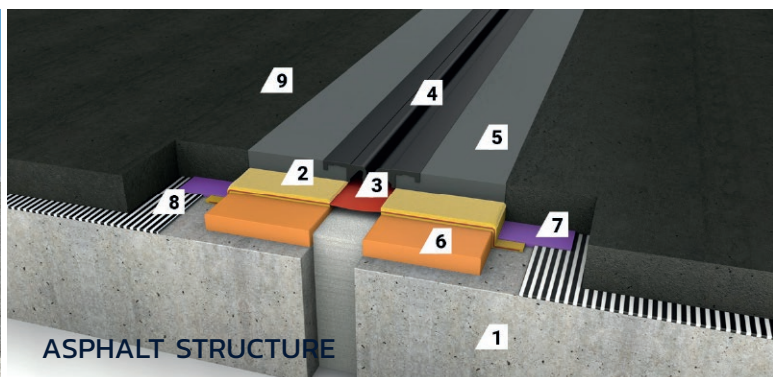
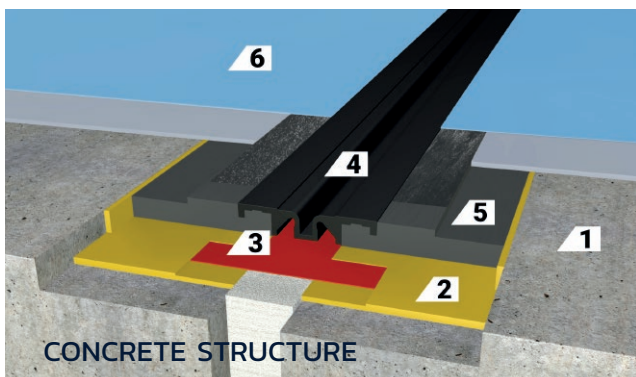
**FIELDS OF APPLICATION**

- Multi-storey and basement car parks

**PRODUCT CHARACTERISTICS**

- tested tight coating connection
- replaceable expansion insert (without damaging the OS-systems)
- metal-free
- easy installation
- tested watertight system design
- overcoatable and free in design

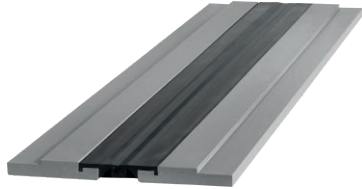
**FloorBridge® CPS 20/50**



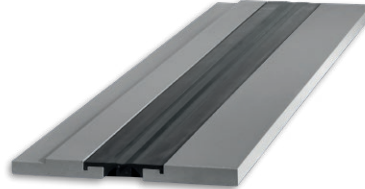
- |                           |                                |                                |                                  |                    |
|---------------------------|--------------------------------|--------------------------------|----------------------------------|--------------------|
| 1 concrete                | 2 adhesive                     | 1 concrete                     | 2 adhesive                       | 3 sealing membrane |
| 3 sealing membrane        | 4 replaceable expansion insert | 4 replaceable expansion insert | 5 joint profile CPS 20/50        | 6 epoxy mortar     |
| 5 joint profile CPS 20/50 | 6 coating                      | 7 tested liquid sealing        | 8 bitumen waterproofing membrane | 9 asphalt          |



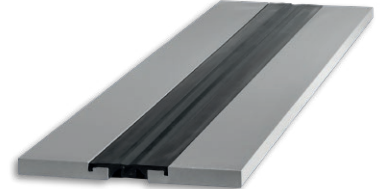
The FloorBridge® CPS 20/50 P is a prefabricated carbon composite floor joint profile with replaceable smooth expansion insert, which prevents dirt accumulation. The product is suitable for vertical as well as horizontal joint movements and is available with or without coating flange depending on the requirements. A tested watertight connection to the adjacent coating is available.



FloorBridge® CPS 20/50 P with double-sided coating connection



FloorBridge® CPS 20/50 P DUO with one-sided coating connection



FloorBridge® CPS 20/50 P MONO without coating connection

**TECHNICAL SPECIFICATION**

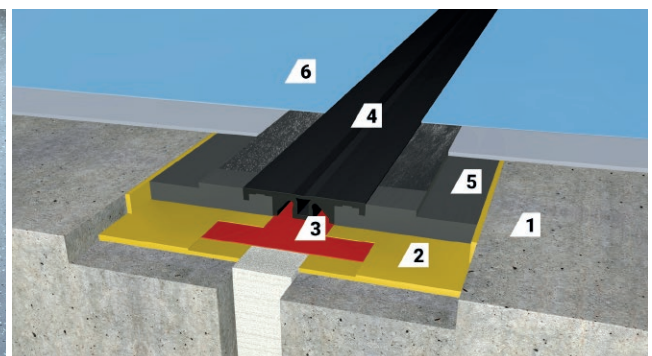
Width of joint profile	approx. 290 mm
Length of joint profile	approx. 1.200 mm installed (1.195 mm net)
Thickness of joint profile	approx. 23 mm
Joint width in substrate	max. 50 mm
Expansion insert	approx. 100 mm
Total horizontal joint movement	15 mm (-5/+10 mm)
Total vertical joint movement	10 mm (-5/+5 mm)
Load (Truck)	600 kN (DIN 1072)
Colour joint profile	grey
Colour expansion insert	black
Packaging (euro-pallet)	84 sets. à 1,20 m (100,8 m)

**FIELDS OF APPLICATION**

- Multi-storey and basement car parks
- shopping centres
- Schools & office buildings

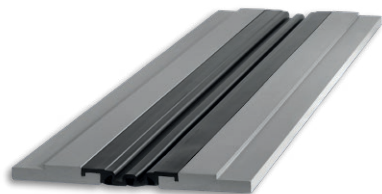
**PRODUCT CHARACTERISTICS**

- tested tight coating connection
- replaceable expansion insert (without damaging the OS-systems)
- metal-free
- easy installation
- tested watertight system design
- overcoatable and free in design

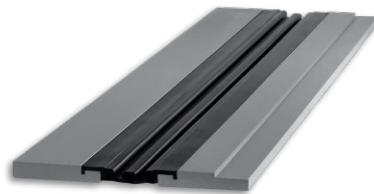


- |                             |                                |
|-----------------------------|--------------------------------|
| 1 concrete                  | 2 adhesive                     |
| 3 sealing membrane          | 4 replaceable expansion insert |
| 5 joint profile CPS 20/50 P | 6 coating                      |

The **FloorBridge® CPS 20/80** is a prefabricated carbon composite floor joint profile with replaceable expansion insert. The product is suitable for vertical as well as horizontal joint movements and is available with or without coating flange depending on the requirements. A tested watertight connection to the adjacent coating is available.



**FloorBridge® CPS 20/80**  
with double-sided coating  
connection



**FloorBridge® CPS 20/80**  
DUO with one-sided coating  
connection



**FloorBridge® CPS 20/80**  
MONO without coating  
connection

### TECHNICAL SPECIFICATION

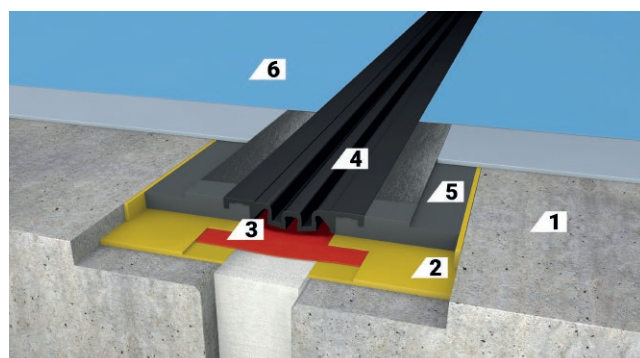
Width of joint profile	approx. 325 mm
Length of joint profile	approx. 1.200 mm installed (1.195 mm net)
Thickness of joint profile	approx. 23 mm
Joint width in substrate	max. 80 mm
Expansion insert	approx. 130 mm
Total horizontal joint movement	80 mm (-30/+50 mm)
Total vertical joint movement	50 mm (-25/+25 mm)
Load (Truck)	600 kN (DIN 1072)
Colour joint profile	grey
Colour expansion insert	black
Packaging profiles (Euro-Pallet)	84 sets. à 1,20 m (100,8 m)

### FIELDS OF APPLICATION

- Multi-storey and basement car parks

### PRODUCT CHARACTERISTICS

- tested tight coating connection
- replaceable expansion insert  
(without damaging the OS-systems)
- metal-free
- easy installation
- tested watertight system design
- overcoatable and free in design

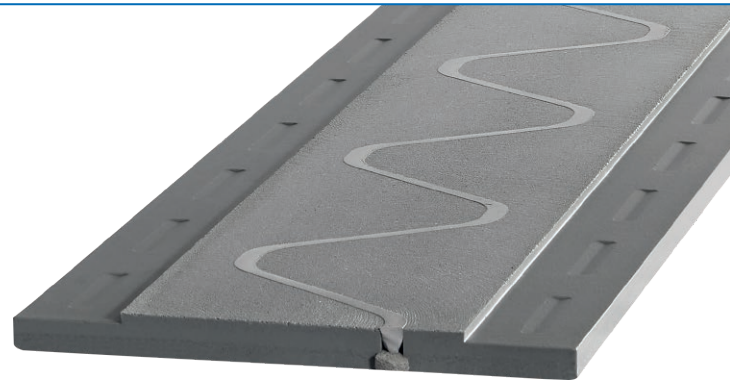


- 1 concrete
- 2 adhesive
- 3 sealing membrane
- 4 replaceable expansion insert
- 5 joint profile CPS 20/80
- 6 coating





The FloorBridge® CP 20/80 is a prefabricated carbon composite floor joint profile with central sine curve and coating flange on both sides. The product is suitable for horizontal joint movements. A tested watertight connection to the adjacent coating is available.



**TECHNICAL SPECIFICATION**

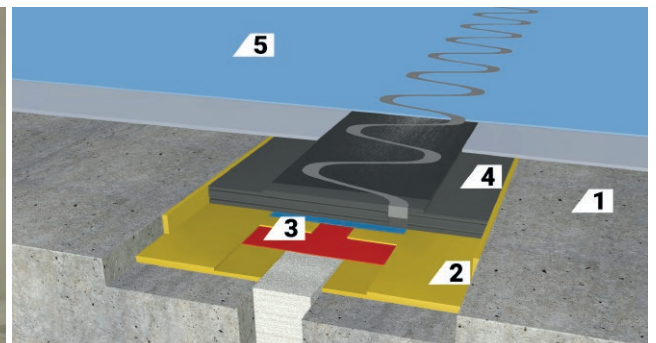
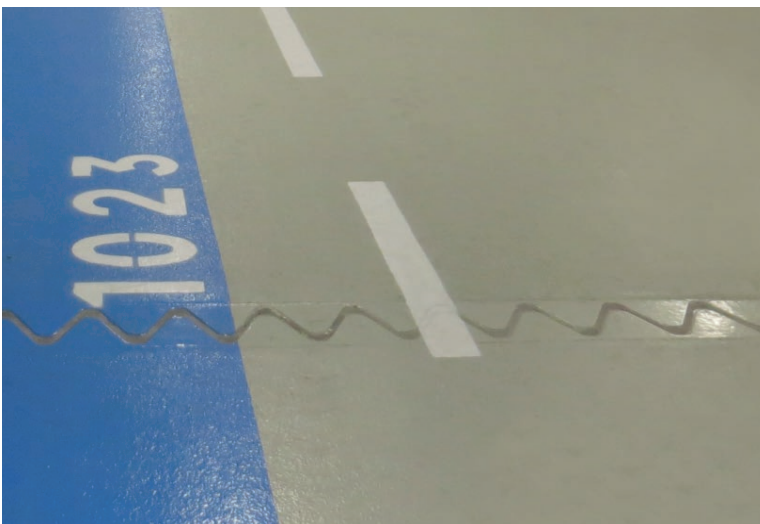
Width of joint profile	approx. 260 mm
Length of joint profile	approx. 1200 mm installed (1195 mm net)
Thickness of joint profile	approx. 20 mm
Joint width in substrate	max. 80 mm
Contamination seal	approx. 20 mm (depending on the version)
Total horizontal joint movement	50 mm (-10/+40 mm)
Operating temperature range	-25°C to a max. of +40°C (if lower or higher temperatures consult the technical department)
Grindable	max. 2 mm
Load (Truck)	600 kN (DIN 1072)
Fire classification	Bfl-s1 (hardly inflammable)
Colour	grey
Packaging (euro-pallet)	84 pcs. à 1,20 m (100,8 m)

**FIELDS OF APPLICATION**

- Multi-storey and basement car parks

**PRODUCT CHARACTERISTICS**

- tested tight coating connection
- replaceable expansion insert (without damaging the OS-systems)
- metal-free
- easy installation
- tested watertight system design
- overcoatable and free in design



- 1 concrete
- 2 adhesive
- 3 sealing membrane
- 4 joint profile CP 20/80
- 5 coating



**FloorBridge® SL 15/08** is a prefabricated carbon composite floor joint profile with central sine curve, without coating flange and is suitable for horizontal joint movements. Specially developed for narrow cracks and contraction joints up to max. 8 mm in the substrate.



### TECHNICAL SPECIFICATION

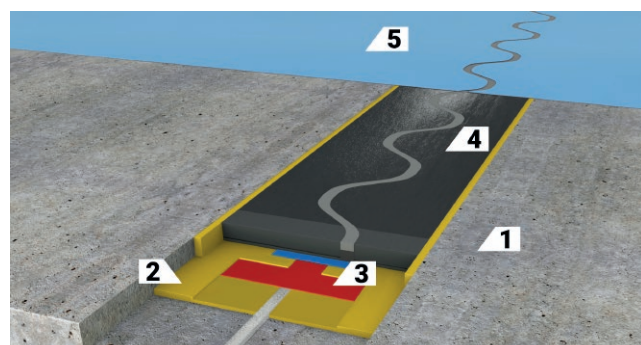
Width of joint profile	approx. 130mm
Length of joint profile	approx. 1.200 mm installed (1.195 mm net)
Thickness of joint profile	approx. 15 mm
Joint width in the substrate	max. 8 mm
Contamination seal	approx. 10 mm (depending on the version)
Total horizontal joint movement	8 mm (-3/+5 mm)
Operating temperature range	-25°C to a max. of +40°C (if lower or higher temperatures consult the technical department)
Grindable	max. 2 mm
Compressive strength	60 N/mm <sup>2</sup> (ONR 23303)
Load	corresponds to forklift class FL6 - axle load 170 kN (DIN EN 1991-1-1)
Fire classification	Bfl-s1 (hardly inflammable)
Colour	grey
Packaging (euro-pallet)	168 pcs. à 1,20 m (201,6 m)

### FIELDS OF APPLICATION

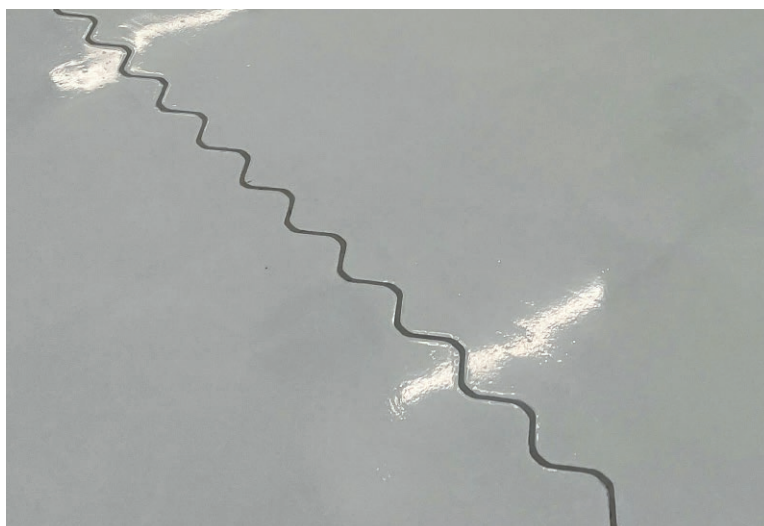
- Multi-storey and basement car parks
- Warehouses and high-bay warehouses
- Industrial buildings
- Car manufacturers and supplier companies
- Production plants
- Shopping centers and supermarkets
- Hospitals and laboratories
- Pharmaceutical industry (production and distribution)
- Food industry (production and distribution)

### PRODUCT CHARACTERISTICS

- tested tight coating connection
- replaceable expansion insert (without damaging the OS-systems)
- metal-free
- easy installation
- tested watertight system design
- overcoatable and free in design



- 1 concrete
- 2 adhesive
- 3 sealing membrane
- 4 joint profile SL 15/08
- 5 coating

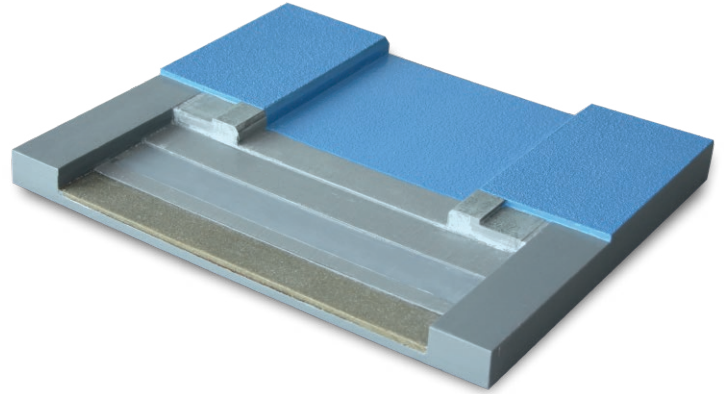


**FloorBridge® SL 15/08**



# FloorBridge® Evaporation system

The FloorBridge® evaporation system is a prefabricated carbon composite side panel with coating flange. A tested watertight connection to the adjacent coating is available.



## TECHNICAL SPECIFICATION

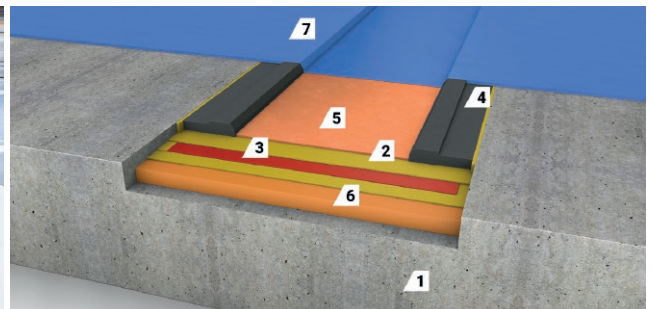
Total width	approx. 410 mm (variable depending on requirements)
Length	approx. 1.200 mm installed (1.195 mm net)
Depth of the evaporation system	max. 20 mm (adjustable according to requirement)
Colour	grey
Packaging (euro-pallet)	90 pcs. à 1,20 m (100,8 m)

## FIELDS OF APPLICATION

- Multi-storey and basement car parks (new construction and renovation)

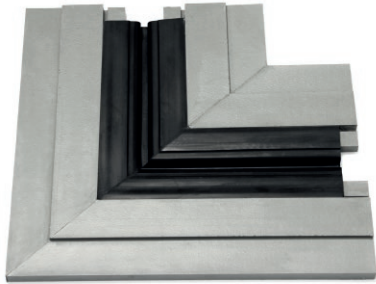
## PRODUCT CHARACTERISTICS

- metal free
- easy installation
- low installation height
- tested waterproof system design
- overcoatable and free in design



- |                     |                          |
|---------------------|--------------------------|
| 1 concrete          | 2 adhesive               |
| 3 sealing membrane  | 4 side panel 23x80       |
| 5 height adjustment | 6 epoxy levelling mortar |
| 7 coating           |                          |

Crossings, wall connections and other moulded parts can be supplied prefabricated according to requirements. The unique, flexible system design also allows moulded parts to be made individually on each construction site.



CPS L-shaped part



CPS Floor/Wall-shaped part 90°



CPS T-shaped part



CPS Cross-shaped part



CPS Wall connection profile

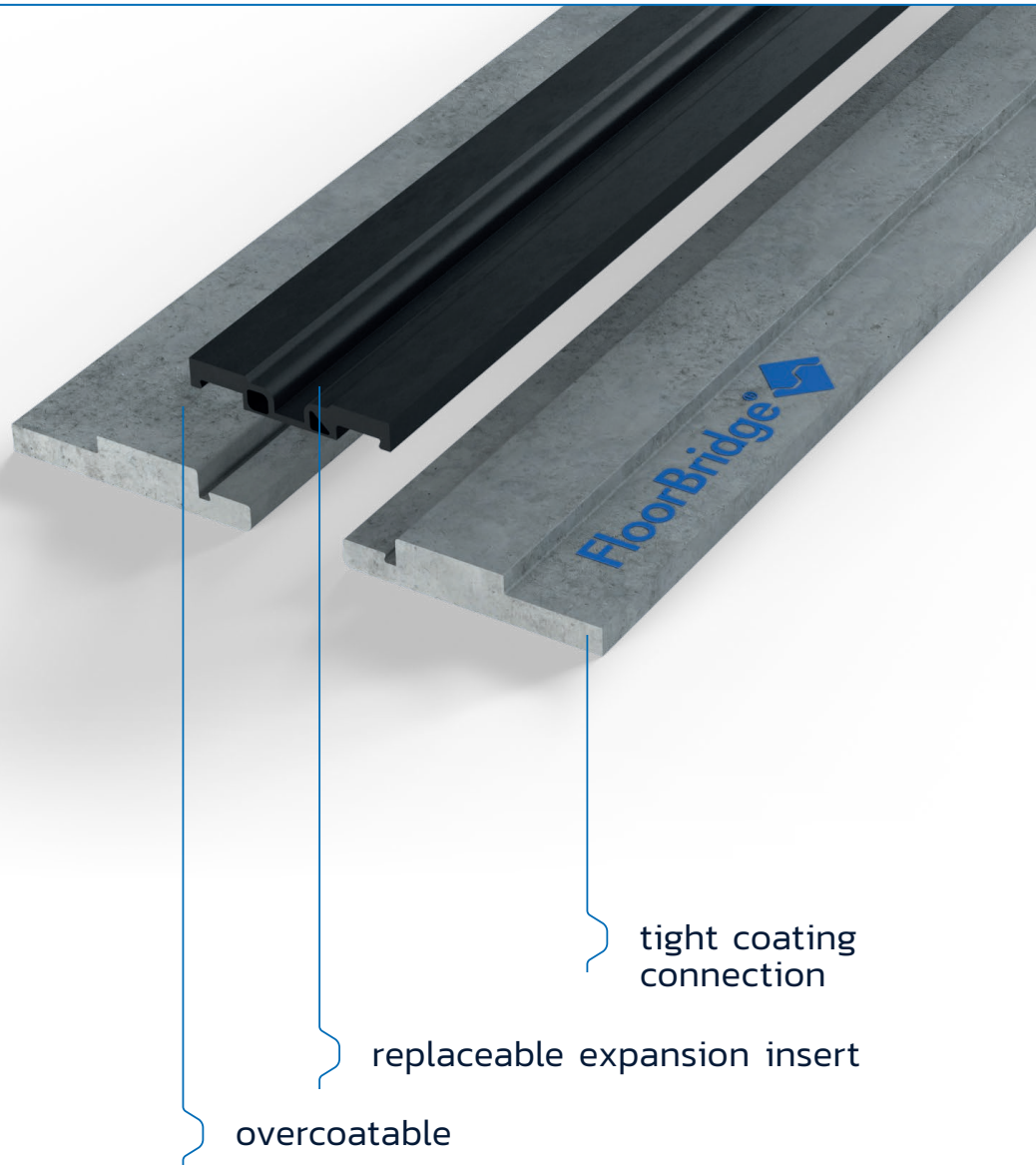


Wall plate  
24 x 20 cm, Art.No. WP  
24 x 120 cm, Art.No. WP 24x120

# Carbon Composite Technology - patented worldwide

## Highest compatibility with concrete and coating

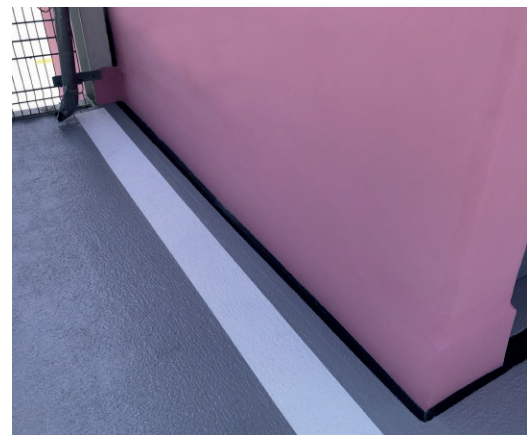
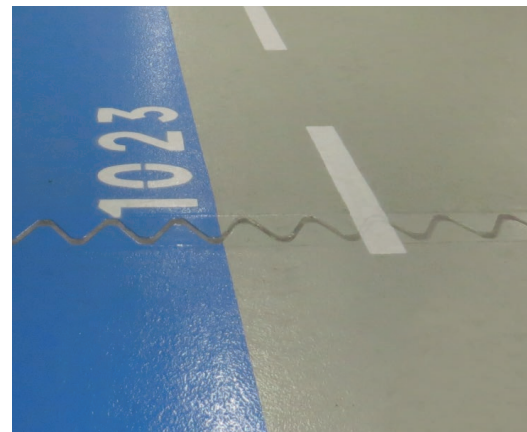
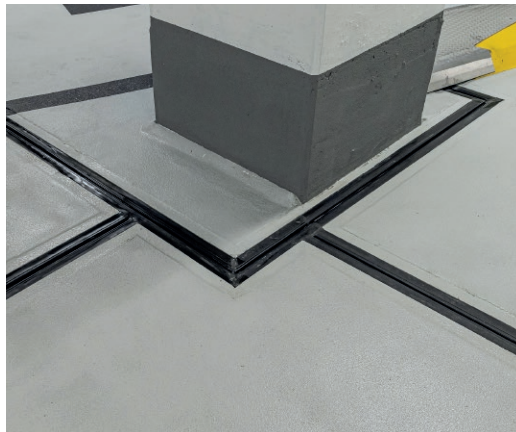
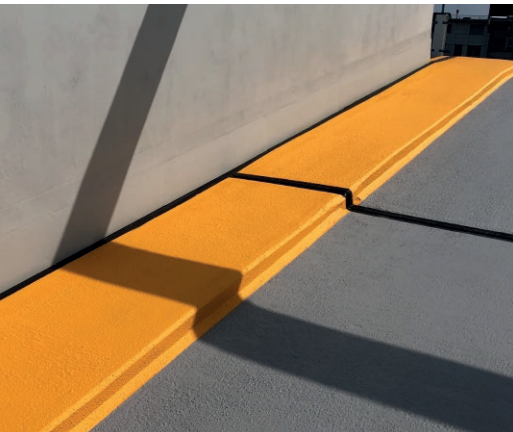
---



- protection of the structure from moisture and salt
- significantly longer service life
- free in design
- Easy installation. Standardized length.
- can be driven over after a short period of time

# Reference photos

## Car park buildings



# FloorBridge® system products



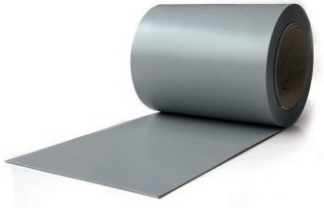
- FloorBridge® Adhesive Connect 01/03**
- 9 kg, Art.No. 35
  - 30 kg, Art.No. 122/Art.No. 34
- FloorBridge® Adhesive Connect 04**
- 26 kg, Art.No. 147



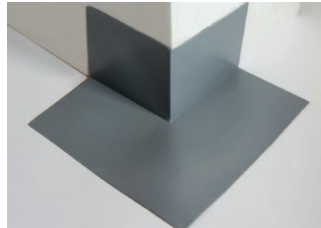
- FloorBridge® Finish**
- transparent, Art.No. 151
  - color ca. RAL 7001, Art.No. 152



- FloorBridge® Epoxy mortar 300**, Art.No. 166



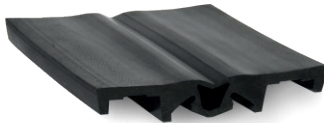
- Sealing membrane (à 40 m)**
- SM 150, Art.No. 33
  - SM 200, Art.No. 69
  - SM 500, Art.No. 135
  - SM 700, Art.No. 138



- Sealing membrane for**
- outside corners 100 x 100 mm, Art.No. 71
  - inside corners 100 x 100 mm, Art.No. 72
  - crossings, Art.No. 119



- FloorBridge® rubber insert for CPS 20/50**, Art.No. 100



- FloorBridge® rubber insert for CPS 20/50 P**, Art.No. 128



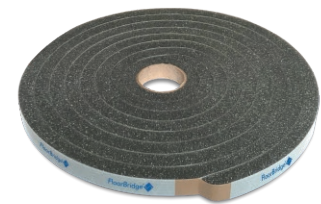
- FloorBridge® rubber insert for CPS 20/80**, Art.No. 101



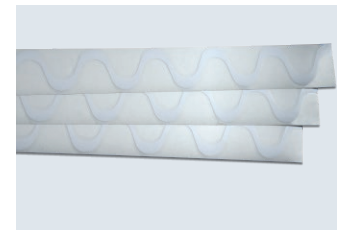
- FloorBridge® wall connection rubber insert for CPS-profiles** Art.No. 102



- FloorBridge® rubber inlay**, Art.No. 124



- FloorBridge® PU-foam tape**, Art.No. 154



- FloorBridge® joint protection foil for:**
- WGX 20/50, Art.No. SF1
  - ST 20/30, Art.No. SF5
  - RC 20/30, Art.No. SF5
  - AC 20/30, Art.No. SF5
  - SL 15/08, Art.No. SF7



- FloorBridge® Cleaner**, Art.No. 9603900



- FloorBridge® Connect 12**, Art.No. 3182121



- FloorBridge® edge insulation strip**, Art.No. 129



FloorBridge® Trowel SP 04 universal, Art.No. 37



Pressing roller 50 mm, Art.No. P1-229/5



Installation aid



Scale, Art.No. S15-PWS35



Cartridge pistol, Art.No. T3-115660



Adhesive tape, Art.No. 402-75



40 mm stucco spatula



Flat brush 10 mm, Art.No. 172



Aluminium latte



# FloorBridge®

Carbon Composite Joint Profiles

## HEADQUARTER

FloorBridge® International GmbH  
Gewerbepark 21  
A-4101 Feldkirchen a. d. Donau  
+43 7233 20 030  
office@floorbridge.com  
floorbridge.com

