

# FloorBridge®

Carbon Composite Joint Profiles



---

**FLOOR JOINT PROFILES**  
for industry, businesses and car parks





## Our values. Your benefits.

Learn more about our values and your benefits when choosing one of our qualified, high-quality products.

For **over 20 years**, we have been working on the construction challenges caused by damage to floors and floor joints. This results in **maintenance costs** for joints, repair costs for machines and harm to employees' health. Expansion joints in concrete or asphalt are much more important than they might appear. They compensate for the dynamics between the floor slabs and bear the **full weight of an axle** in a minimal area.



FloorBridge® solves the issue of **floor joint maintenance** at the source. The joint profile is chosen based on the condition of the floor slabs and the movement of the joints. We provide our customers with a **permanent solution** which, depending on the design, is ready to bear any loads or be driven over in just a few hours. In addition, our joint floor joint profiles do not contain any metal, meaning they are 100% rust-free.



The profiles are designed for **immediate installation in any length**. Profiles in a standardised length are adapted and bonded on site. There is no need to wait for special parts such as wall skirtings or corners. FloorBridge® joint profiles are adapted to any joint design and **can be ground down to the same level**. The low installation height makes them ideal for new construction and renovations.



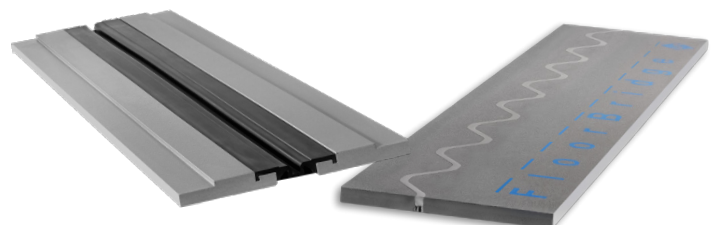
FloorBridge® **withstands loads over the long term**, whether from high axial pressure or joint movements of several millimetres, and meets architectural requirements. The profiles can be **coated as desired** and thus fit perfectly into your colour concept.



Static and dynamic requirements for joints demand a solution that have similar properties as the concrete and coating systems themselves. Our **carbon composite technology** meets this requirement like no another solution. The joints of FloorBridge® profiles provide **safety and protection for the property** and meet hygiene requirements in the building. Floor joints should be **permanently water-proof, seamless and able to be driven over with little vibration**. We meet the highest demands.



Our floor joint profiles are **put through their paces**. The tests go far beyond the standard, be it **compliance with the EU Vibration Directive, CE marking, AgBB conformity or a building authority test certificate**. Our repertoire of test certificates is extensive, and we are constantly striving to expand it.



# We are pioneers in manufacturing carbon composite floor joint profiles.

We are **bridge builders**, between people in teams and our customers. We build the smallest bridges in the world – over floor joints. We build bridges to the people who work with us on site, and we build bridges to decision-makers throughout the world, between architects and planners, installers and coaters, building contractors, operators, entrepreneurs, polishers, etc. **The bridges that we are building are durable.**

Thanks to **collective expertise and years of experience** in floor and concrete renovation, the FloorBridge® team has developed a brand-new, patented and globally unique floor joint profile in carbon composite technology. Its **maximum compatibility with concrete and coating** make it perhaps the most long-lasting solution for floor joints. For **more than 10 years**, certified partners have installed meters and meters of profiles as a permanent solution.

The FloorBridge® joint profile system is patented globally and has a protected trademark.



**Our environment is near and dear to us.** Environmental awareness on the market has risen substantially – sustainability has become a crucial criterion for quality.

In addition to **ISO 9001:2015** certification in quality management, at FloorBridge® International, we also have **ISO 14001:2015** (environmental management system) certification. Environmental aspects in the company are identified, evaluated and implemented on an ongoing basis. We are taking sustainable measures and our commitment is proven by this certification.



The joint profiles are produced, continuously improved and shipped worldwide from the company headquarters in Feldkirchen an der Donau (Upper Austria).



# FLOOR JOINT PROFILES FOR INDUSTRY

## Maximum compatibility with concrete and coating.

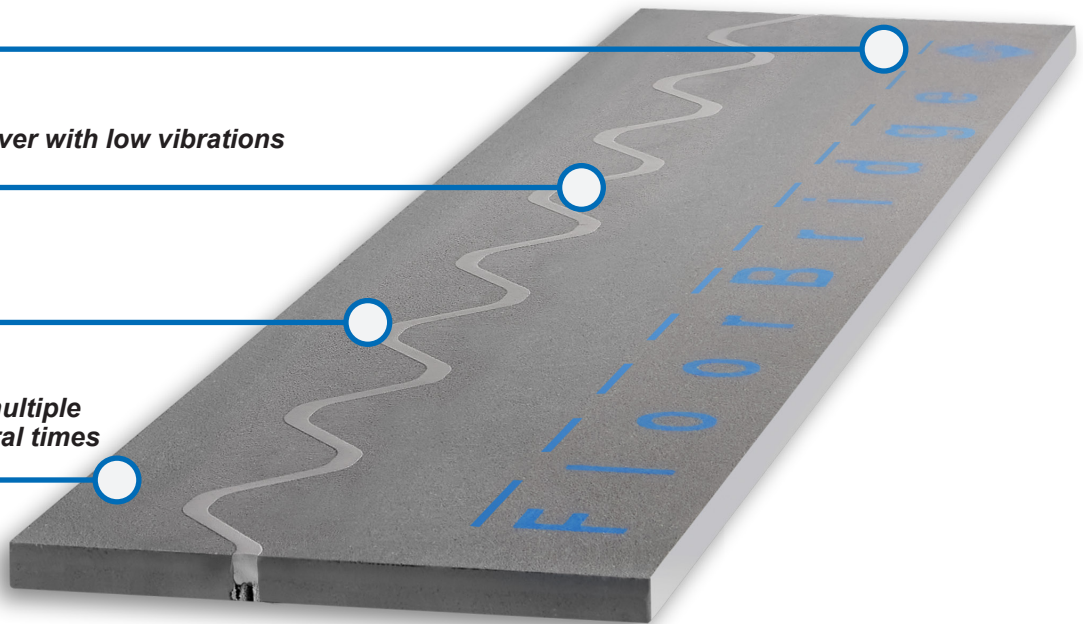
**Uneven and unsealed floor joints** in warehouses, production halls or hospitals cause noise or impact loads on the wheel bearings of forklifts. In the long run, this results in **high repair costs**. Today, floor joints for industrial floors must be **low-vibration, highly resilient, hygienically sealed and allow for a design of your choosing**. FloorBridge® floor joint profiles in carbon composite technology are the only product that meets these requirements.

*Abrasion indicator*

*Sine curve for driving over with low vibrations*

*Joint filler/dirt brake*

*Can be ground down multiple times and coated several times*



**Highly resilient:** From pedestrians to heavy loads



**Long service life and low maintenance costs**



**Can be driven over with little vibration:** Profiles adapted to floor level can be driven over with low vibration and noise. This substantially reduces maintenance costs for forklifts.



**Can be ground down multiple times:** The carbon composite profiles can be ground down multiple times and, as such, can be optimally adapted to any existing floor.



**Waterproof:** FloorBridge® joint profiles in a waterproof design are possible thanks to the tested, sealed coating connection.



**Custom colour scheme:** The profiles can be coated as desired and thus fit perfectly into your colour concept.



## OVERVIEW OF INDUSTRIAL PROFILES

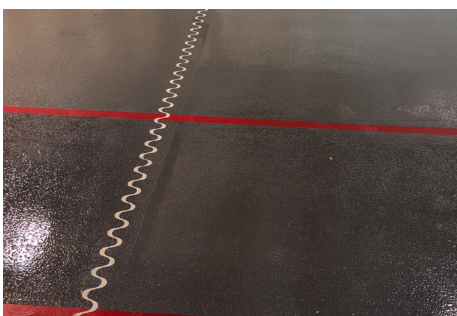
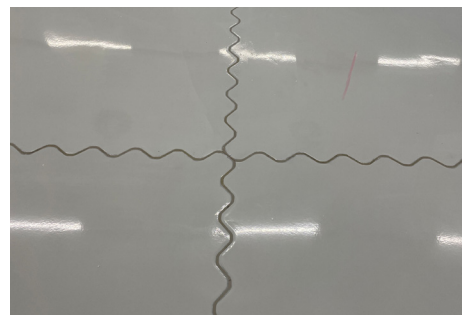
	WGX 20/50	SLX 15/10	RC 20/30	ST 20/30	ST 30/30	AC 20/30
Approx. joint profile width	255 mm	130 mm	250 mm			
Approx. joint profile length	1,200 mm installed, net 1,195 mm					
Approx. joint profile thickness	20 mm	15 mm	20 mm		30 mm	20 mm
Max. joint width in substrate	50 mm	10 mm	30 mm			
Approx. dirt brake	15 mm	10 mm				
Total horizontal joint movement	30 mm (-10/+20 mm)	8 mm (-3/+5 mm)	25 mm (-5/+20 mm)			30 mm (-10/+20 mm)
Temperature use range	5 °C to max. 40 °C (consult the technical department if temperatures are lower or higher)					
Max. grindable amount	2 mm				5 - 10 mm	2 mm
Compressive strength	80 N/mm²	60 N/mm²	80 N/mm²			
Load capacity	Corresponds to FL6 forklift class - 170 kN axle load					
Fire class	Bfl-s1					
Colour shade	Grey					
Packaging (Euro pallet)	84 sets, 1.2 m each (100.8 m)	168 sets, 1.2 m each (201.6 m)	84 sets, 1.2 m each (100.8 m)		57 sets, 1.2 m each (68.4 m)	84 sets, 1.2 m each (100.8 m)

2002/44/EC EU vibration directive



## OUR REFERENCES

Get a first impression.





FloorBridge®  
Carbon Composite Joint Profiles

# FloorBridge® WGX 20/50

Prefabricated carbon composite floor joint profile with eccentrically mounted sine curve for wide joints.

## PRODUCT FEATURES

- ✓ Metal-free
- ✓ Can be ground down multiple times
- ✓ Highly resilient
- ✓ Coatable with a design of your choosing
- ✓ Considerable reduction in maintenance costs for forklifts
- ✓ Sealed coating connection possible
- ✓ Simple installation
- ✓ Can be driven over with little vibration

Corresponds to 2002/44/EC EU Vibration Directive

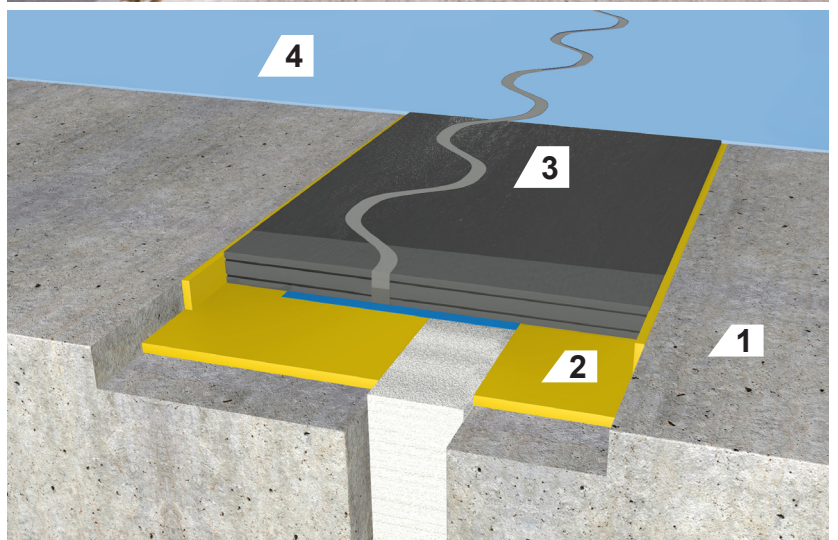


## APPLICATION AREAS

- ✓ Standard & high-bay warehouses
- ✓ Industrial construction
- ✓ Carmakers & suppliers
- ✓ Production plants
- ✓ Shopping centres & supermarkets
- ✓ Hospitals & labs
- ✓ Pharmaceuticals (production & sales)
- ✓ Food industry (production & sales)

## TECHNICAL DATA

Joint profile width	Approx. 255 mm
Joint profile length	Approx. 1,200 mm installed (1,195 mm net)
Joint profile thickness	Approx. 20 mm
Joint width in substrate	Max. 50 mm
Dirt brake	Approx. 15 mm
Total horizontal joint movement	30 mm (-10/+20 mm)
Temperature use range	-25 °C to max. +40 °C (consult the technical department if temperatures are lower or higher)
Grindable amount	Max. 2 mm
Compressive strength	80 N/mm <sup>2</sup> (ONR 23303)
Load capacity	Corresponds to FL6 forklift class – 170 kN axle load (DIN EN 1991-1-1)
Fire class	Bfl-s1 (flame-retardant)
Colour shade	Grey
Packaging (Euro pallet)	84 sets, 1.20 m each (100.8 m)



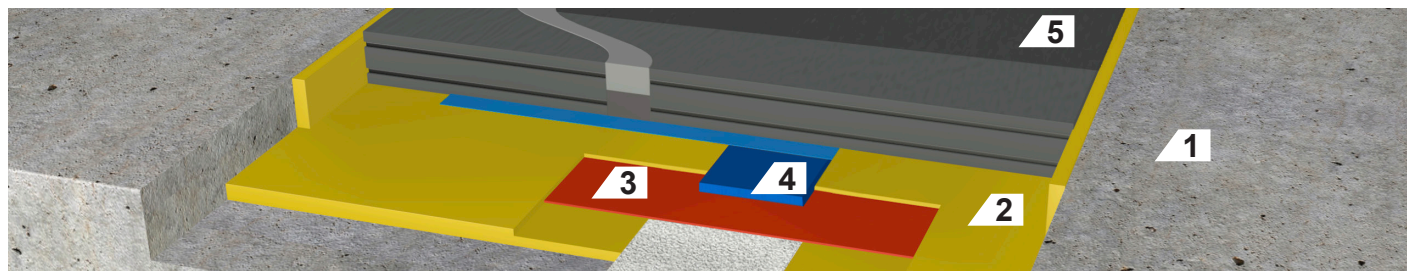
- 1 Structural concrete
- 2 Composite adhesive
- 3 WGX 20/50 joint profile
- 4 Coating/sealing



# OUR WATERPROOF VERSION.

## Discover our supplementary products.

Our **waterproof version of the WGX 20/50** for areas in which fluids must not get below the profile and into the ground, such as when working with aggressive cleaning agents. It can also be used in areas exposed to high chemical loads.



1 Structural concrete

2 Composite adhesive

3 FloorBridge® SM 150

4 PU foam tape

5 WGX 20/50 joint profile

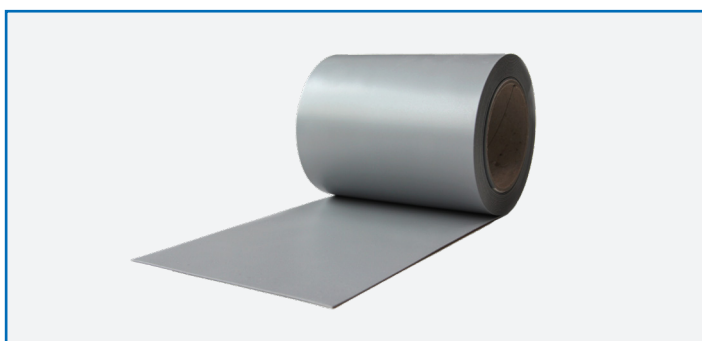
## Our system products for a waterproof version.

### FloorBridge® SM 150

For **sealing underneath FloorBridge® joint profiles** for dilatation, building and construction joints in indoor and outdoor areas for a waterproof design.

### FloorBridge® PU foam tape

PU foam tape is glued to the sealing tape along the joint to ensure **continuous joint clearance**.

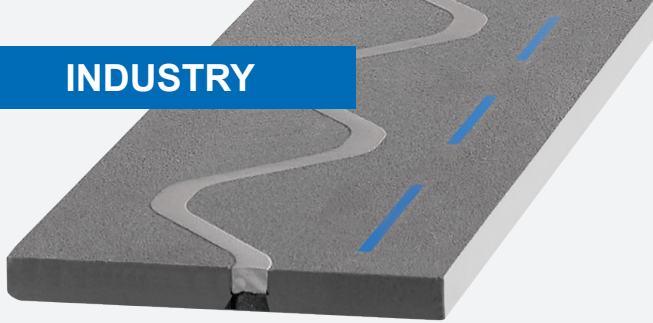


- ✓ **High-performance sealing tape** based on TPE
- ✓ **Colour shade:** Grey
- ✓ **Total thickness:** 1 mm
- ✓ **Roll length:** 40 m
- ✓ **Transverse elongation at break:** 600% (DIN EN 12311-2, Process B)
- ✓ **Longitudinal elongation at break:** 565 % (DIN EN 12311-2, Process B)
- ✓ **Good chemical resistance** to hydrochloric acid, sulphuric acid, citric acid, salt water, etc.

- ✓ **Single-sided adhesive, thread-reinforced foam tape based on PU**



A waterproof design is possible for all industrial floor joint profiles. Our sales team will be happy to answer any **questions you may have about our products and supplements** – contact us by phone or e-mail!



# FloorBridge® SLX 15/10

Prefabricated carbon composite floor joint profile with eccentrically mounted sine curve for wider kerfs and contraction joints.

## PRODUCT FEATURES

- ✓ Metal-free
- ✓ Can be ground down multiple times
- ✓ Highly resilient
- ✓ Coatable with a design of your choosing
- ✓ Considerable reduction in maintenance costs for forklifts
- ✓ Sealed coating connection possible
- ✓ Simple installation
- ✓ Can be driven over with little vibration

Corresponds to 2002/44/EC EU Vibration Directive

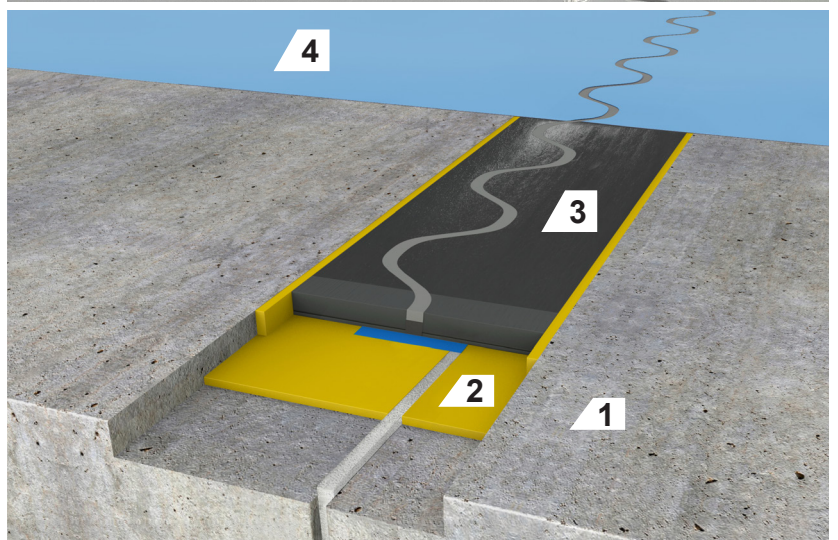
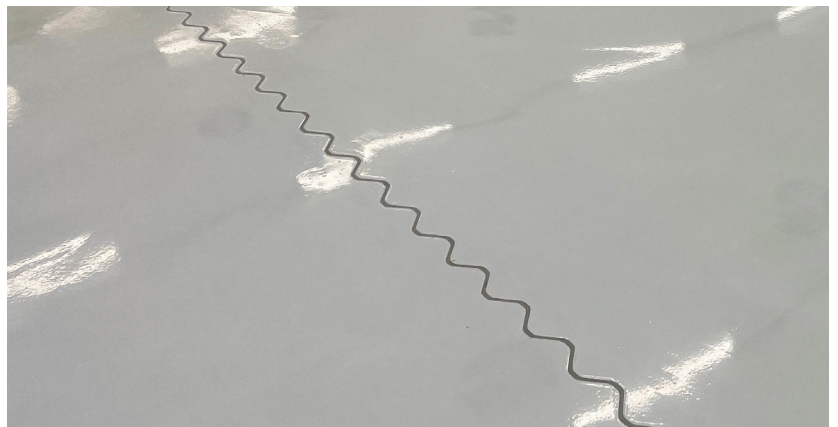


## APPLICATION AREAS

- ✓ Standard & high-bay warehouses
- ✓ Industrial construction, production plants
- ✓ Carmakers & suppliers
- ✓ Multi-storey and underground car parks
- ✓ Shopping centres & supermarkets
- ✓ Hospitals & labs
- ✓ Pharmaceuticals (production & sales)
- ✓ Food industry (production & sales)

## TECHNICAL DATA

Joint profile width	Approx. 130 mm
Joint profile length	Approx. 1,200 mm installed (1,195 mm net)
Joint profile thickness	Approx. 15 mm
Joint width in substrate	Max. 10 mm
Dirt brake	Approx. 10 mm
Total horizontal joint movement	8 mm (-3/+5 mm)
Temperature use range	-25 °C to max. +40 °C (consult the technical department if temperatures are lower or higher)
Grindable amount	Max. 2 mm
Compressive strength	60 N/mm <sup>2</sup> (ONR 23303)
Load capacity	Corresponds to FL6 forklift class – 170 kN axle load (DIN EN 1991-1-1)
Fire class	Bfl-s1 (flame-retardant)
Colour shade	Grey
Packaging (Euro pallet)	168 sets, 1.20 m each (201.6 m)

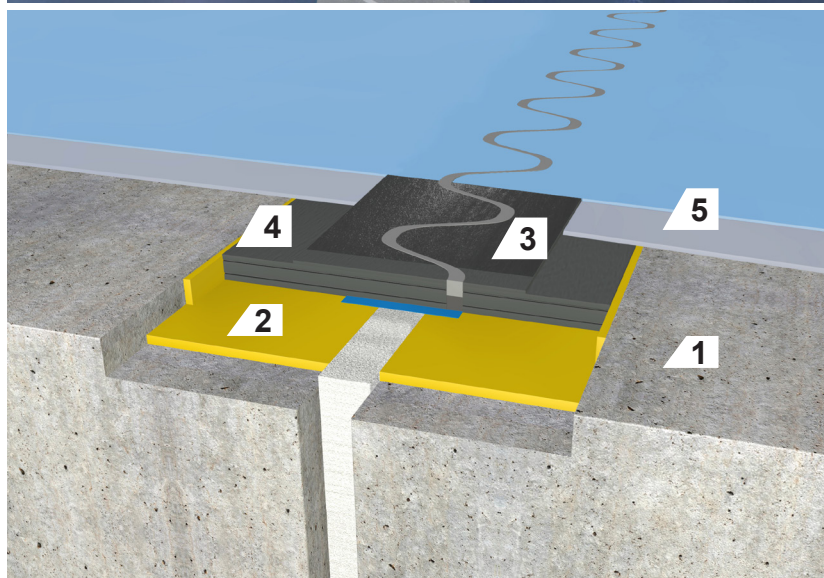
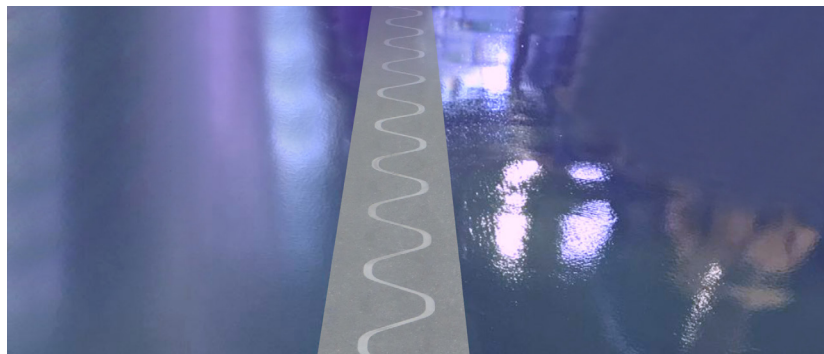


- 1 Structural concrete
- 2 Composite adhesive
- 3 SLX 15/10 joint profile
- 4 Coating/sealing



## TECHNICAL DATA

Joint profile width	Approx. 250 mm
Joint profile length	Approx. 1,200 mm installed (1,195 mm net)
Joint profile thickness	Approx. 20 mm
Joint width in substrate	Max. 30 mm
Dirt brake	Approx. 10 mm
Total horizontal joint movement	25 mm (-5/+20 mm)
Temperature use range	-25 °C to max. +40 °C (consult the technical department if temperatures are lower or higher)
Grindable amount	Max. 2 mm
Compressive strength	80 N/mm <sup>2</sup> (ONR 23303)
Load capacity	Corresponds to FL6 forklift class – 170 kN axle load (DIN EN 1991-1-1)
Fire class	Bfl-s1 (flame-retardant)
Colour shade	Grey
Packaging (Euro pallet)	84 sets, 1.20 m each (100.8 m)



- 1 Structural concrete
- 2 Composite adhesive
- 3 RC 20/30 joint profile
- 4 Coating flange
- 5 Coating

## INDUSTRY



FloorBridge®  
Carbon Composite Joint Profiles

## FloorBridge® RC 20/30

Prefabricated carbon composite floor joint profile with a coating flange on both sides.

### PRODUCT FEATURES

- ✓ Metal-free
- ✓ Can be ground down multiple times
- ✓ Highly resilient
- ✓ Coatable with a design of your choosing
- ✓ Considerable reduction in maintenance costs for forklifts
- ✓ Sealed coating connection possible
- ✓ Simple installation
- ✓ Can be driven over with little vibration

Corresponds to 2002/44/EC EU Vibration Directive



### APPLICATION AREAS

- ✓ Standard & high-bay warehouses
- ✓ Industrial construction
- ✓ Carmakers & suppliers
- ✓ Production plants
- ✓ Shopping centres & supermarkets
- ✓ Hospitals & labs
- ✓ Pharmaceuticals (production & sales)
- ✓ Food industry (production & sales)



FloorBridge®  
Carbon Composite Joint Profiles

# FloorBridge® ST 20/30

Prefabricated carbon composite floor joint profile with central sine curve.

## PRODUCT FEATURES

- ✓ Metal-free
- ✓ Can be ground down multiple times
- ✓ Highly resilient
- ✓ Coatable with a design of your choosing
- ✓ Considerable reduction in maintenance costs for forklifts
- ✓ Sealed coating connection possible
- ✓ Simple installation
- ✓ Can be driven over with little vibration

Corresponds to 2002/44/EC EU Vibration Directive

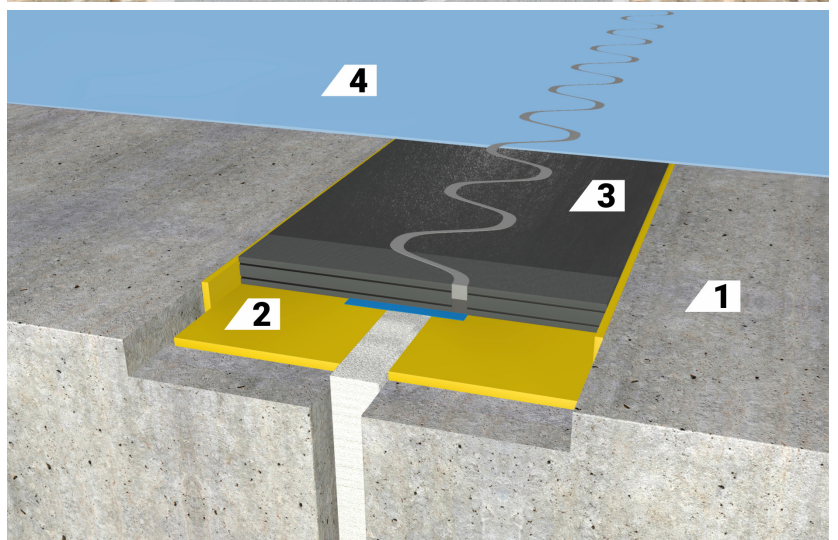


## APPLICATION AREAS

- ✓ Standard & high-bay warehouses
- ✓ Industrial construction
- ✓ Carmakers & suppliers
- ✓ Production plants
- ✓ Shopping centres & supermarkets
- ✓ Hospitals & labs
- ✓ Pharmaceuticals (production & sales)
- ✓ Food industry (production & sales)

## TECHNICAL DATA

Joint profile width	Approx. 250 mm
Joint profile length	Approx. 1,200 mm installed (1,195 mm net)
Joint profile thickness	Approx. 20 mm
Joint width in substrate	Max. 30 mm
Dirt brake	Approx. 10 mm
Total horizontal joint movement	25 mm (-5/+20 mm)
Temperature use range	-25 °C to max. +40 °C (consult the technical department if temperatures are lower or higher)
Grindable amount	Max. 2 mm
Compressive strength	80 N/mm <sup>2</sup> (ONR 23303)
Load capacity	Corresponds to FL6 forklift class – 170 kN axle load (DIN EN 1991-1-1)
Fire class	Bfl-s1 (flame-retardant)
Colour shade	Grey
Packaging (Euro pallet)	84 sets, 1.20 m each (100.8 m)

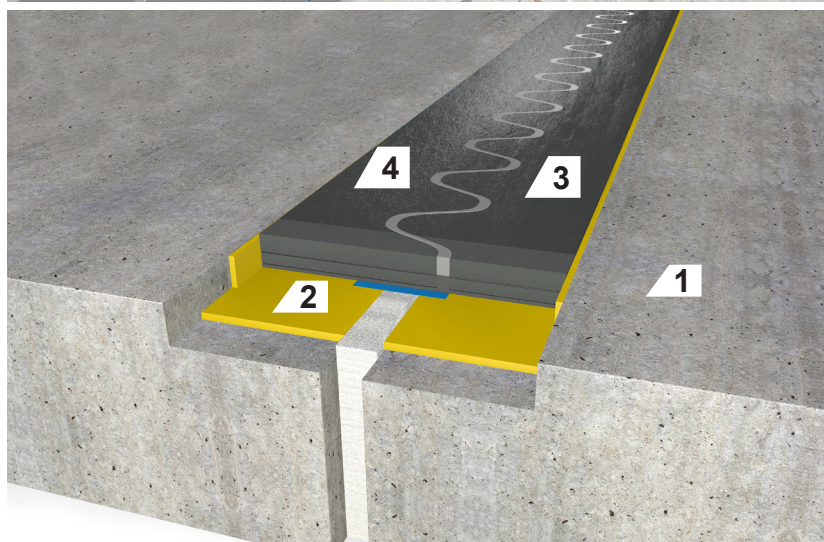
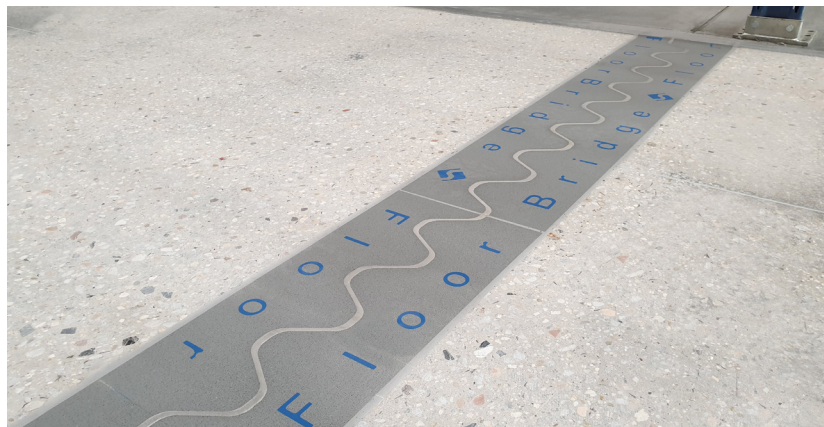


- 1 Structural concrete
- 2 Composite adhesive
- 3 ST 20/30 joint profile
- 4 Coating/sealing



## TECHNICAL DATA

Joint profile width	Approx. 250 mm
Joint profile length	Approx. 1,200 mm installed (1,195 mm net)
Joint profile thickness	Approx. 30 mm
Joint width in substrate	Max. 30 mm
Dirt brake	Approx. 10 mm
Total horizontal joint movement	25 mm (-5/+20 mm)
Temperature use range	-25 °C to max. +40 °C (consult the technical department if temperatures are lower or higher)
Grindable amount	The grinding depth must be between 5 and 10 mm.
Compressive strength	80 N/mm <sup>2</sup> (ONR 23303)
Load capacity	Corresponds to FL6 forklift class – 170 kN axle load (DIN EN 1991-1-1)
Fire class	Bfl-s1 (flame-retardant)
Colour shade	Grey
Packaging (Euro pallet)	57 sets, 1.20 m each (68.4 m)



- 1 Structural concrete  
 2 Composite adhesive  
 3 ST 30/30 joint profile  
 4 Sealing

## INDUSTRY

FloorBridge®  
Carbon Composite Joint Profiles

## FloorBridge® ST 30/30

Prefabricated carbon composite floor joint profile for high-bay warehouses and areas where a large grinding depth is required.

### PRODUCT FEATURES

- ✓ Metal-free
- ✓ Can be ground down multiple times
- ✓ Highly resilient
- ✓ Coatable with a design of your choosing
- ✓ Considerable reduction in maintenance costs for forklifts
- ✓ Sealed coating connection possible
- ✓ Simple installation
- ✓ Can be driven over with little vibration

Corresponds to 2002/44/EC EU Vibration Directive



### APPLICATION AREAS

- ✓ High-bay warehouses

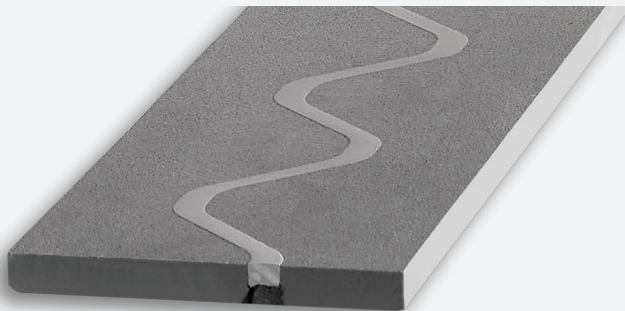
## INDUSTRY



FloorBridge®  
Carbon Composite Joint Profiles

## FloorBridge® AC 20/30

Prefabricated carbon composite floor joint profile for easy access with air cushion vehicles up to a joint width of 30 mm in the substrate.



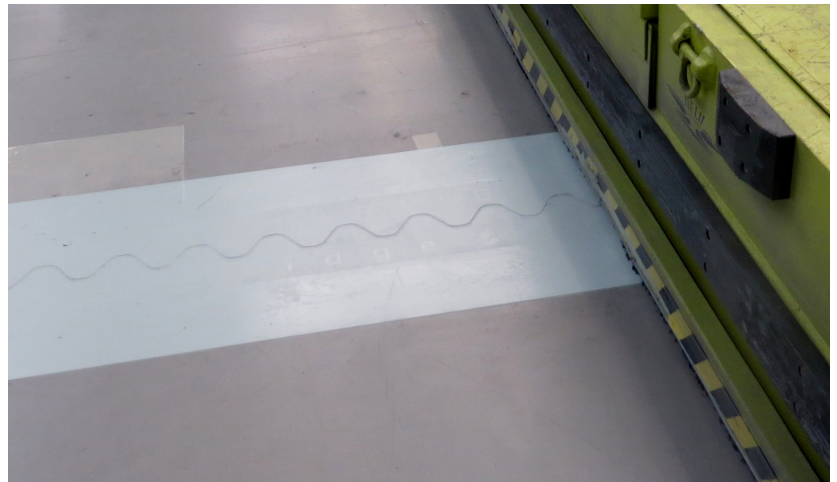
FloorBridge®  
Carbon Composite Joint Profiles

## FloorBridge® SL 15/08

Prefabricated carbon composite floor joint profile for cut and shrinkage joints up to a joint width of 8 mm in the substrate.

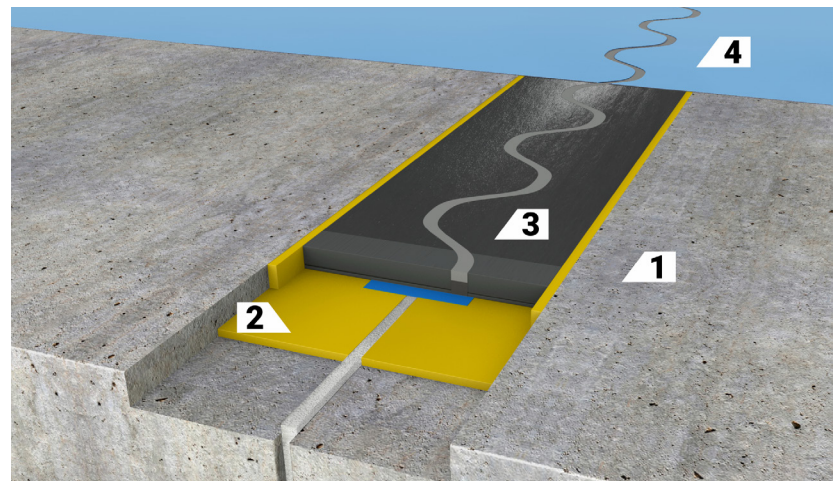
## TECHNICAL DATA

Joint profile width	Approx. 250 mm
Joint profile length	Approx. 1,200 mm installed (1,195 mm net)
Joint profile thickness	Approx. 20 mm
Total horizontal joint movement	30 mm (-10/+20 mm)
Grindable amount	Max. 2 mm
Compressive strength	80 N/mm <sup>2</sup> (ONR 23303)



## TECHNICAL DATA

Joint profile width	Approx. 130 mm
Joint profile length	Approx. 1,200 mm installed (1,195 mm net)
Joint profile thickness	Approx. 15 mm
Total horizontal joint movement	8 mm (-3/+5 mm)
Grindable amount	Max. 2 mm
Compressive strength	60 N/mm <sup>2</sup> (ONR 23303)



- 1 Structural concrete
- 2 Composite adhesive
- 3 SL 15/08 joint profile
- 4 Coating/sealing



# ADDITIONAL PROFILE TYPES

ST 30/30 Terrazzo, SL 15/05, LDP 20, WGX 20/70



## ST 30/30 TERRAZZO

Prefabricated carbon composite floor joint profile with terrazzo effect for joint widths of up to 30 mm.

### TECHNICAL DATA

Joint profile width	Approx. 250 mm
Joint profile length	Approx. 1,200 mm installed (1,195 mm net)
Joint profile thickness	Approx. 30 mm
Total horizontal joint movement	25 mm (-5/+20 mm)
Grindable amount	5 - 10 mm
Compressive strength	80 N/mm <sup>2</sup> (ONR 23303)

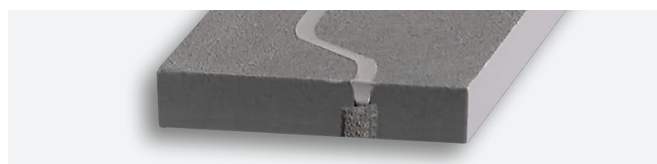


## SL 15/05

Prefabricated carbon composite floor joint profile for narrow cut and shrinkage joints up to 5 mm.

### TECHNICAL DATA

Joint profile width	Approx. 80 mm
Joint profile length	Approx. 1,200 mm installed (1,195 mm net)
Joint profile thickness	Approx. 15 mm
Total horizontal joint movement	5 mm (-2/+3 mm)
Grindable amount	Max. 2 mm
Compressive strength	60 N/mm <sup>2</sup> (ONR 23303)



## LDP 20

Load distribution plate for high stability on surfaces with an enormous load capacity.

### TECHNICAL DATA

Plate width	Approx. 240 mm / varies based on requirement
Plate length	Approx. 1,200 mm
Plate thickness	Approx. 20 mm
Load capacity	80 N/mm <sup>2</sup> (ONR 23303)
Flexural strength	60 N/mm <sup>2</sup> (DIN EN 196-1)
Wear	Class A6 according to Böhme (ÖNORM EN 13892-3)

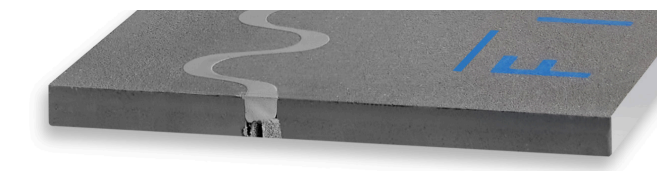


## WGX 20/70

Prefabricated carbon composite floor joint profile for particularly wide joints up to 70 mm.

### TECHNICAL DATA

Joint profile width	Approx. 255 mm
Joint profile thickness	Approx. 20 mm
Sandable	Max. 2 mm
Total horizontal joint movement	30 mm (-10/+20 mm)
Compressive strength	80 N/mm <sup>2</sup> (ONR 23303)

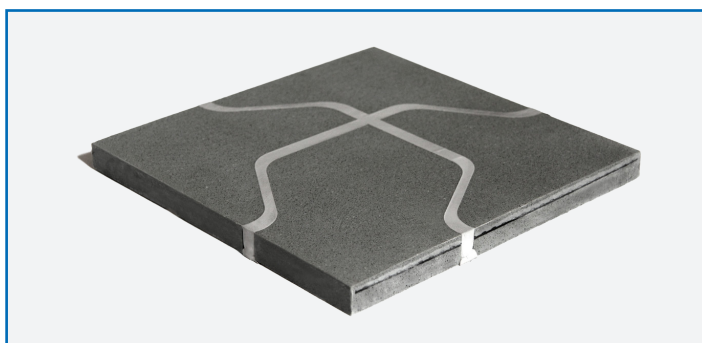


## MOULDED PARTS

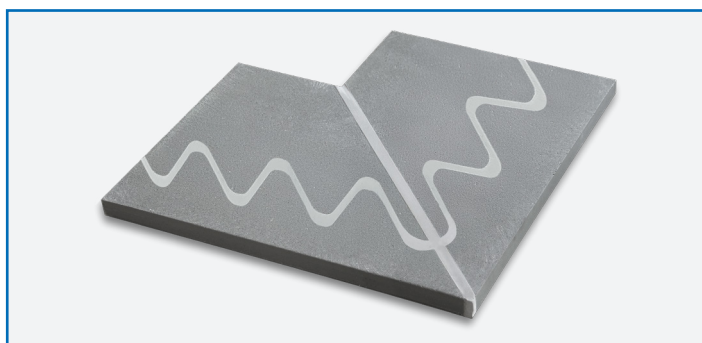
### Junctions, wall connections and other moulded parts.

These can be supplied prefabricated **according to requirements**.

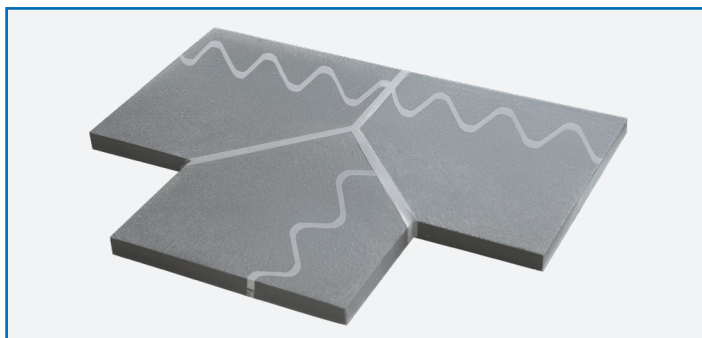
Thanks to the adaptability of the individual profiles during installation, the **unique, flexible system design** also enables production of moulded parts individually on every construction site – suitable detailed solutions without extra costs and long-term planning in advance.



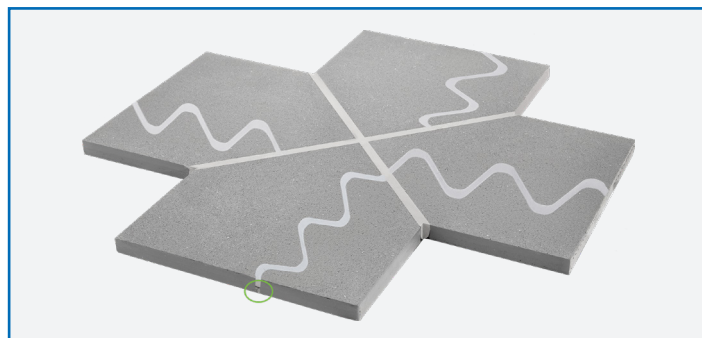
**Uni-shaped part for ST 20/30**  
Item no. 23



**WGX L-shaped part, item no. 27**  
**RC L-shaped part, item no. 91**



**WGX T-shaped part, item no. 28**  
**RC T-shaped part, item no. 92**



**WGX cross-shaped part, item no. 29**  
**RC cross-shaped part, item no. 64**



**Wall plate**  
24 x 20 cm, item no. WP  
24 x 120 cm, item no. WP 24x120



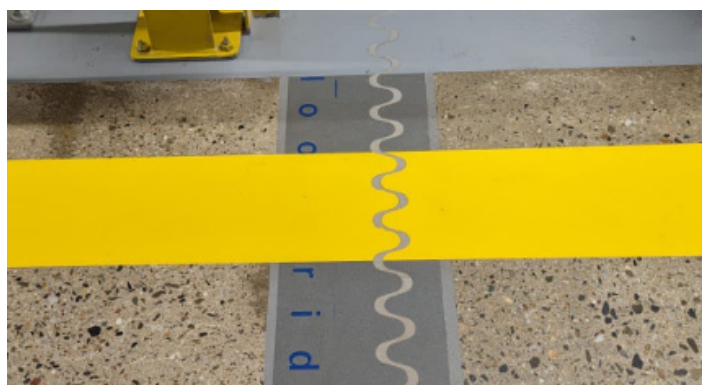
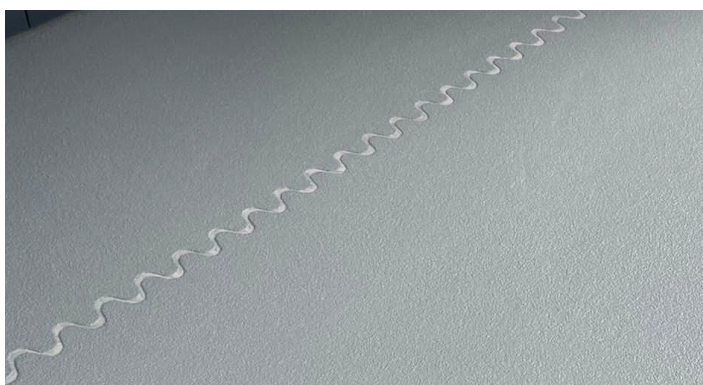
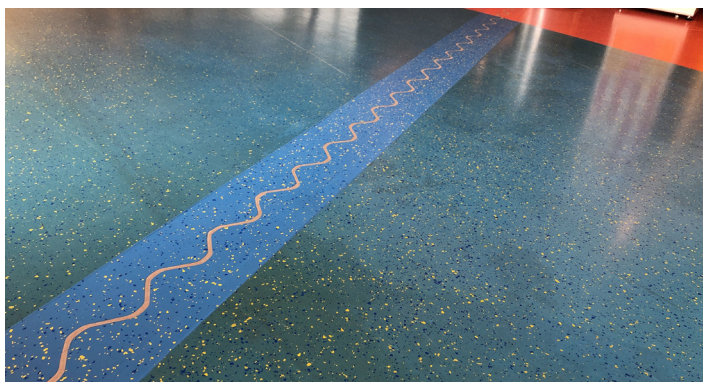
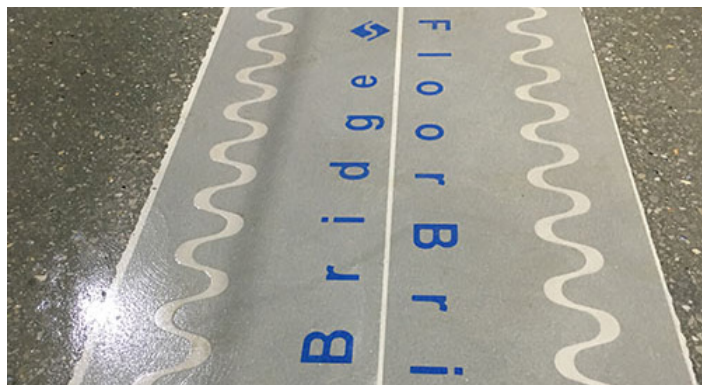
All images are for illustrative purposes only.



# REFERENCES

A small selection of our references in the industrial sector.

Take a look at our **small selection of successful projects** to get a **first impression** of our products in the industrial sector.



# FLOOR JOINT PROFILES FOR MULTI-STOREY CAR PARKS

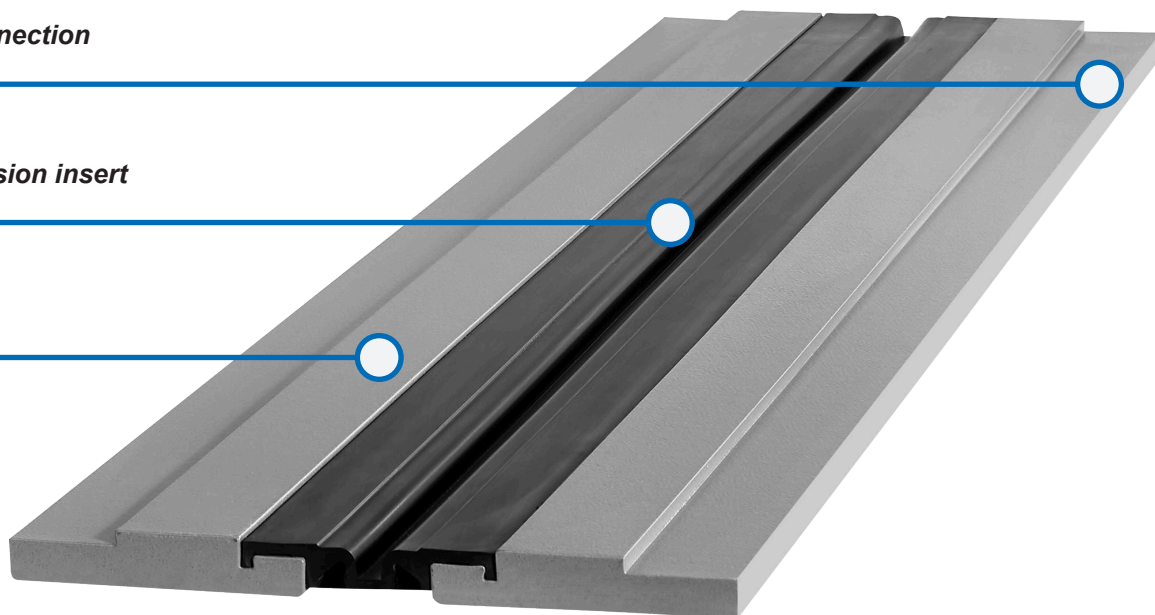
**Optimal protection for the statics and structure of multi-storey and underground car parks and parking levels.**

The **materials of multi-storey and underground car parks** are subjected to enormous static and weather-related challenges due to thousands of tons of load, moisture and de-icing salt. Joint transition solutions serve a crucial function. **Carbon composite floor joint profiles** with a permanently sealed coating connection protect the materials in the long term.

*Sealed coating connection*

*Replaceable expansion insert*

*Can be coated*



**Waterproof:** The best protection thanks to a tested and sealed coating connection and easy-to-replace rubber insert.



**Highly resilient:** From pedestrians to heavy loads.



**Long service life** and **low maintenance costs.**



**Absolutely free of metal:** FloorBridge® joint profiles are free of metal, meaning they are 100% rust-free. As de-icing salt and water are carried directly into underground car parks, parking levels and multi-storey car parks from outside, the absence of metal is a key criterion for smooth operation.



**Custom colour scheme:** The profiles can be coated as desired and thus fit perfectly into your colour concept.



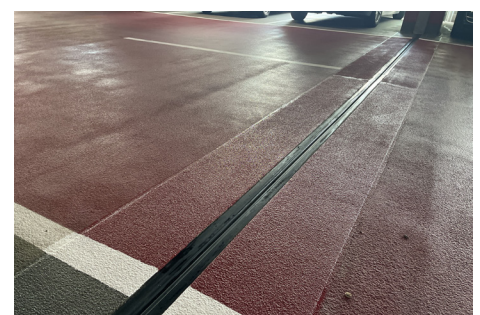
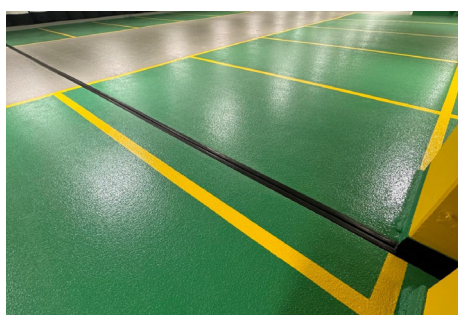
## OVERVIEW OF MULTI-STOREY CAR PARK PROFILES

	CPS 20/50 Mono, Duo	CPS 20/50 P Mono, Duo	CPS 20/50 TD	CPS 20/80 Mono, Duo	CPS 20/80 TD
Approx. joint profile width	290 mm			325 mm	
Approx. joint profile length	1,200 mm installed, net 1,195 mm				
Approx. joint profile thickness	23 mm		18 mm	23 mm	18 mm
Max. joint width in substrate	50 mm			80 mm	
Approx. expansion insert	100 mm			130 mm	
Total horizontal joint movement	50 mm (-20/+30 mm)	15 mm (-10/+15 mm)	50 mm (-20/+30 mm)	80 mm (-30/+50 mm)	
Total vertical joint movement	30 mm (-15/+15 mm)	10 mm (-5/+5 mm)	30 mm (-15/+15 mm)	50 mm (-25/+15 mm)	
Lorry load capacity	600 kN (DIN 1072)				
Fire class	Bfl-s1				
Colour shade	Joint profile: grey, rubber insert: black				
Packaging (Euro pallet)	84 sets, 1.2 m each (100.8 m)				



## OUR REFERENCES

Get a first impression.



## MULTI-STOREY CAR PARK



FloorBridge® CPS 20/50 with a coating connection on both sides



# FloorBridge® CPS 20/50

Prefabricated carbon composite floor joint profile with replaceable expansion insert for horizontal and vertical joint movements.

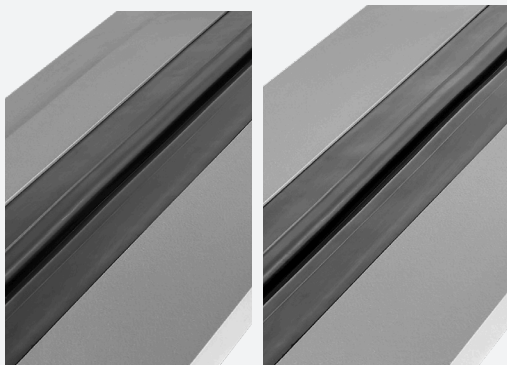
## PRODUCT FEATURES

- ✓ Tested and sealed coating connection
- ✓ Replaceable expansion insert (without damage to protective coating systems)
- ✓ Metal-free
- ✓ Simple installation
- ✓ Tested, waterproof system design
- ✓ Coatable with a design of your choosing



## APPLICATION AREAS

- ✓ Multi-storey and underground car parks

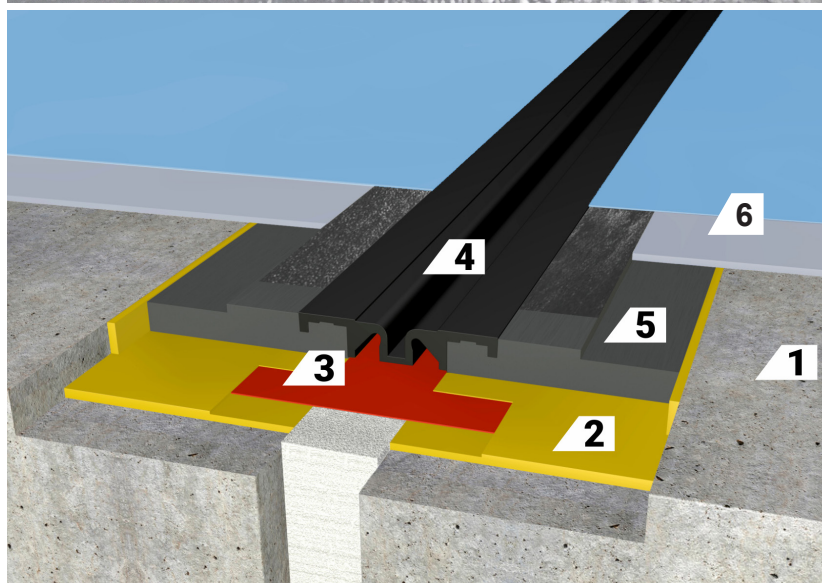


FloorBridge® CPS 20/50 DUO with a coating connection on one side

FloorBridge® CPS 20/50 MONO without coating connection

## TECHNICAL DATA

Joint profile width	Approx. 290 mm
Joint profile length	Approx. 1,200 mm installed (1,195 mm net)
Joint profile thickness	Approx. 23 mm
Joint width in substrate	Max. 50 mm
Expansion insert	Approx. 100 mm
Total horizontal joint movement	50 mm (-20/+30 mm)
Total vertical joint movement	30 mm (-15/+15 mm)
Lorry load capacity	600 kN (DIN 1072)
Colour shade of joint profile	Grey
Colour shade of expansion insert	Black
Packaging (Euro pallet)	84 sets, 1.20 m each (100.8 m)

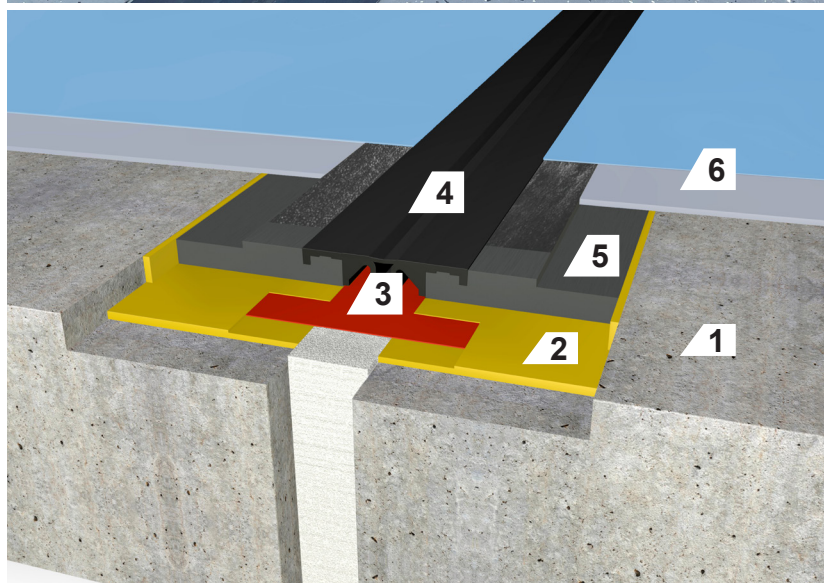


- 1 Structural concrete
- 2 Composite adhesive
- 3 Sealing tape
- 4 Replaceable expansion insert
- 5 CPS 20/50 joint profile
- 6 Coating



## TECHNICAL DATA

Joint profile width	Approx. 290 mm
Joint profile length	Approx. 1,200 mm installed (1,195 mm net)
Joint profile thickness	Approx. 23 mm
Joint width in substrate	Max. 50 mm
Expansion insert	Approx. 100 mm
Total horizontal joint movement	25 mm (-10/+15 mm)
Total vertical joint movement	10 mm (-5/+5 mm)
Lorry load capacity	600 kN (DIN 1072)
Colour shade of joint profile	Grey
Colour shade of expansion insert	Black
Packaging (Euro pallet)	84 sets, 1.20 m each (100.8 m)



- 1 Structural concrete
- 2 Composite adhesive
- 3 Sealing tape
- 4 Replaceable expansion insert
- 5 CPS 20/50 P joint profile
- 6 Coating

## MULTI-STOREY CAR PARK

FloorBridge®  
Carbon Composite Joint Profiles

FloorBridge® CPS 20/50 P with  
a coating connection on both sides

## FloorBridge® CPS 20/50 P

Prefabricated carbon composite floor joint profile with replaceable expansion insert for horizontal and vertical joint movements and a smooth expansion insert to prevent dirt accumulation.

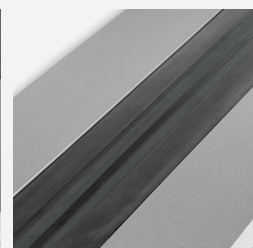
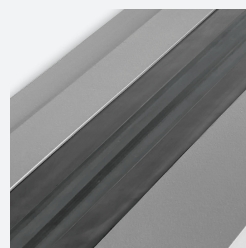
### PRODUCT FEATURES

- ✓ Tested and sealed coating connection
- ✓ Replaceable expansion insert (without damage to protective coating systems)
- ✓ Metal-free
- ✓ Simple installation
- ✓ Tested, waterproof system design
- ✓ Coatable with a design of your choosing



### APPLICATION AREAS

- ✓ Multi-storey and underground car parks
- ✓ Shopping centres
- ✓ Schools & office buildings



FloorBridge® CPS 20/50  
P DUO with a coating  
connection on one side

FloorBridge® CPS 20/50  
P MONO without coating  
connection



## FloorBridge® CPS 20/50 TD

Prefabricated carbon composite floor joint profile with replaceable expansion insert for horizontal and vertical joint movements on the top parking level.

### PRODUCT FEATURES

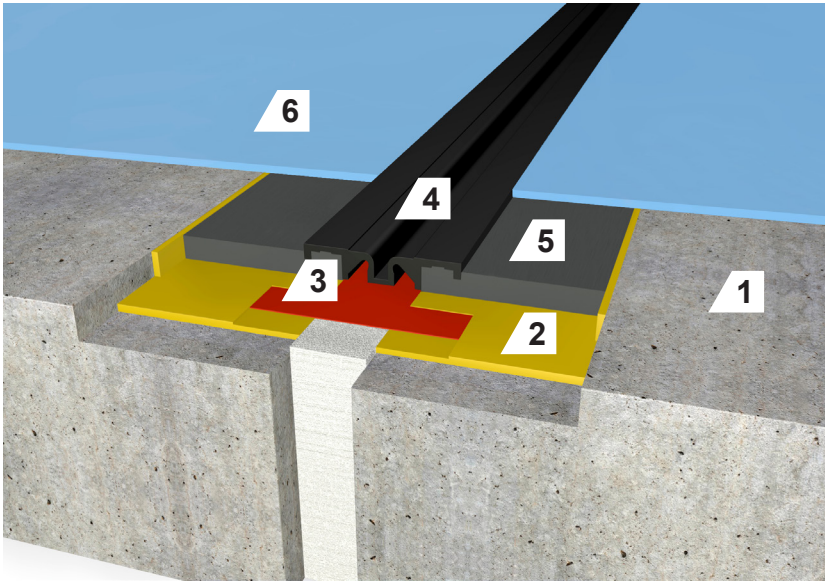
- ✓ Tested and sealed coating connection
- ✓ Replaceable expansion insert (without damage to protective coating systems)
- ✓ Metal-free
- ✓ Simple installation
- ✓ Tested, waterproof system design
- ✓ Coatable with a design of your choosing



### APPLICATION AREAS

- ✓ Multi-storey and underground car parks

TECHNICAL DATA	
Joint profile width	Approx. 290 mm
Joint profile length	Approx. 1,200 mm installed (1,195 mm net)
Joint profile thickness	Approx. 18 mm
Joint width in substrate	Max. 50 mm
Expansion insert	Approx. 100 mm
Total horizontal joint movement	50 mm (-20/+30 mm)
Total vertical joint movement	30 mm (-15/+15 mm)
Lorry load capacity	600 kN (DIN 1072)
Colour shade of joint profile	Grey
Colour shade of expansion insert	Black
Packaging (Euro pallet)	84 sets, 1.20 m each (100.8 m)

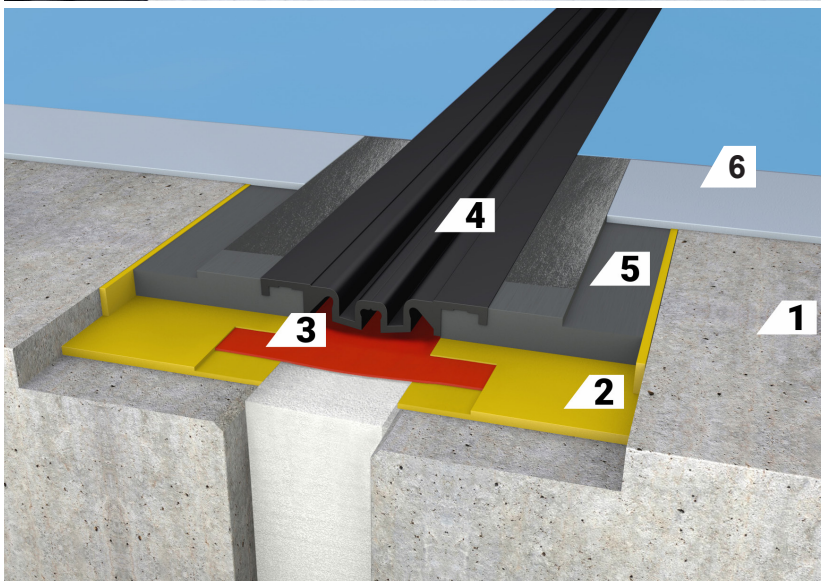


- 1 Structural concrete
- 2 Composite adhesive
- 3 Sealing tape
- 4 Replaceable expansion insert
- 5 CPS 20/50 TD joint profile
- 6 Coating



## TECHNICAL DATA

Joint profile width	Approx. 325 mm
Joint profile length	Approx. 1,200 mm installed (1,195 mm net)
Joint profile thickness	Approx. 23 mm
Joint width in substrate	Max. 80 mm
Expansion insert	Approx. 130 mm
Total horizontal joint movement	80 mm (-30/+50 mm)
Total horizontal joint movement	50 mm (-25/+25 mm)
Lorry load capacity	600 kN (DIN 1072)
Colour shade of joint profile	Grey
Colour shade of expansion insert	Black
Packaging (Euro pallet)	84 sets, 1.20 m each (100.8 m)



- 1 Structural concrete
- 2 Composite adhesive
- 3 Sealing tape
- 4 Replaceable expansion insert
- 5 CPS 20/80 joint profile
- 6 Coating

## MULTI-STOREY CAR PARK

FloorBridge®  
Carbon Composite joint profiles

FloorBridge® CPS 20/80 with a coating connection on both sides

## FloorBridge® CPS 20/80

Prefabricated carbon composite floor joint profile with replaceable expansion insert for horizontal and vertical joint movements of especially wide joints.

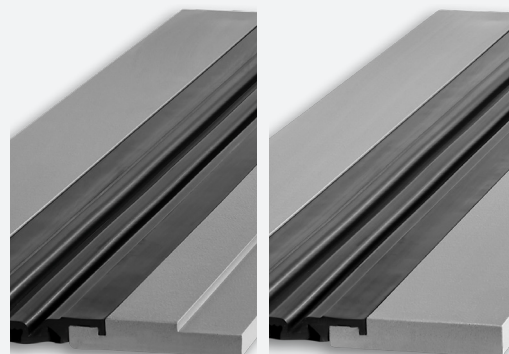
### PRODUCT FEATURES

- ✓ Tested and sealed coating connection
- ✓ Replaceable expansion insert (without damage to protective coating systems)
- ✓ Metal-free
- ✓ Simple installation
- ✓ Tested, waterproof system design
- ✓ Coatable with a design of your choosing



### APPLICATION AREAS

- ✓ Multi-storey and underground car parks



FloorBridge® CPS 20/80  
DUO with a coating  
connection on one side

FloorBridge® CPS 20/80  
MONO without coating  
connection



## FloorBridge® CPS 20/80 TD

Prefabricated carbon composite floor joint profile with replaceable expansion insert for horizontal and vertical joint movements on the top parking level and of especially wide joints.

### PRODUCT FEATURES

- ✓ Tested and sealed coating connection
- ✓ Replaceable expansion insert (without damage to protective coating systems)
- ✓ Metal-free
- ✓ Simple installation
- ✓ Tested, waterproof system design
- ✓ Coatable with a design of your choosing

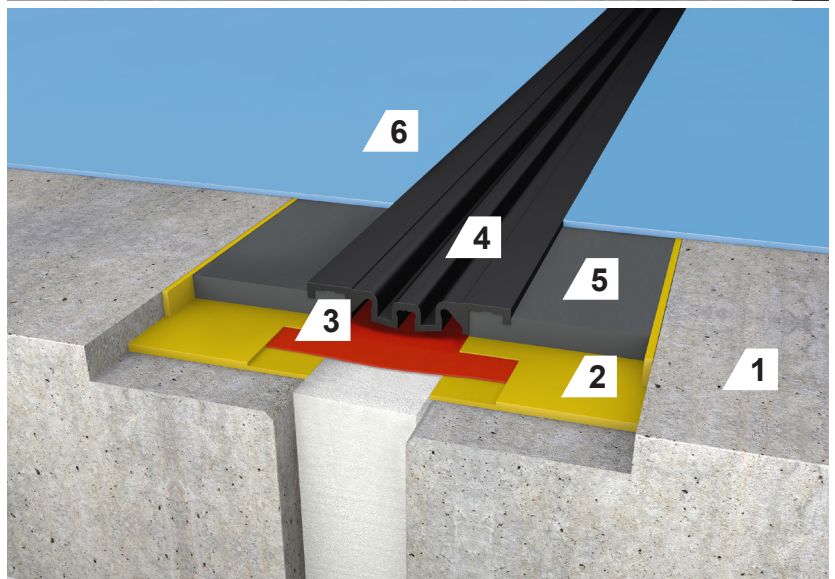


### APPLICATION AREAS

- ✓ Multi-storey and underground car parks

### TECHNICAL DATA

Joint profile width	Approx. 325 mm
Joint profile length	Approx. 1,200 mm installed (1,195 mm net)
Joint profile thickness	Approx. 18 mm
Joint width in substrate	Max. 80 mm
Expansion insert	Approx. 130 mm
Total horizontal joint movement	80 mm (-30/+50 mm)
Total vertical joint movement	30 mm (-25/+25 mm)
Lorry load capacity	600 kN (DIN 1072)
Colour shade of joint profile	Grey
Colour shade of expansion insert	Black
Packaging (Euro pallet)	84 sets, 1.20 m each (100.8 m)



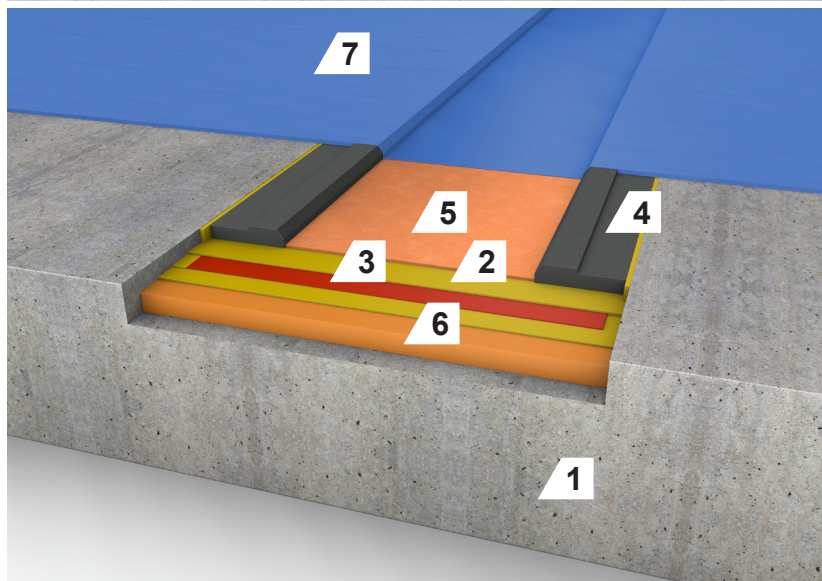
- 1 Structural concrete
- 2 Composite adhesive
- 3 Sealing tape
- 4 Replaceable expansion insert
- 5 CPS 20/80 TD joint profile
- 6 Coating



## TECHNICAL DATA

<b>Total width</b>	Approx. 410 mm (varies based on requirement)
<b>Length</b>	Approx. 1,200 mm installed (1,195 mm net)
<b>Depth of the evaporation system</b>	Max. 20 mm (can be set based on requirement)
<b>Colour shade</b>	Grey
<b>Colour shade of expansion insert</b>	Black
<b>Packaging (Euro pallet)</b>	90 sets, 1.20 m each (108 m)

A tested, waterproof connection to the adjacent coating is possible. Individual drains can be integrated into the evaporation system.



- 1 Structural concrete
- 2 Composite adhesive
- 3 Sealing tape
- 4 23x80 side part
- 5 Connect height compensation
- 6 Epoxy levelling mortar
- 7 Coating



FloorBridge®  
Carbon Composite Joint Profiles

## FloorBridge® Evaporation system

Prefabricated carbon composite side part with coating flange for manufacturing evaporation troughs of any width.

### PRODUCT FEATURES

- ✓ Metal-free
- ✓ Simple installation
- ✓ Low installation height
- ✓ Tested, waterproof system design
- ✓ Coatable with a design of your choosing



### APPLICATION AREAS

- ✓ Multi-storey and underground car parks (new construction and renovation)



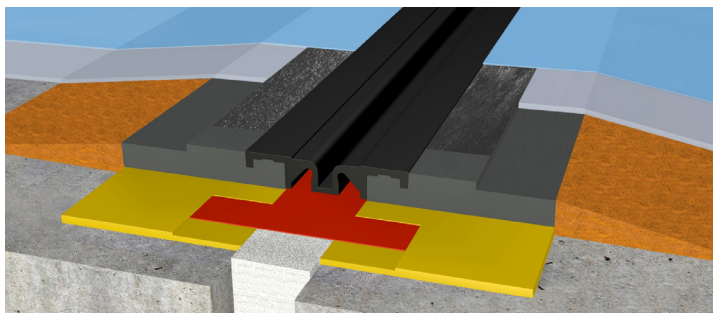
## ADDITIONAL DESIGN VARIANTS

### Attached joint profile, asphalt structure and CPS Duo



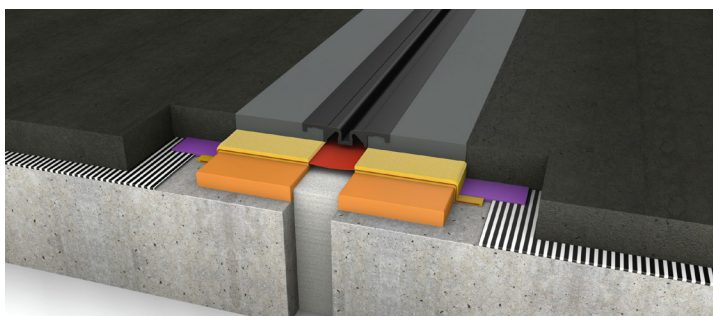
#### Attached joint profile

If the joint profile cannot be set at the proper depth due to the situation, the joint profile is installed on top and the ramp is created with synthetic resin mortar. Depending on the ramp width, this variant can also be used as a traffic calming device.



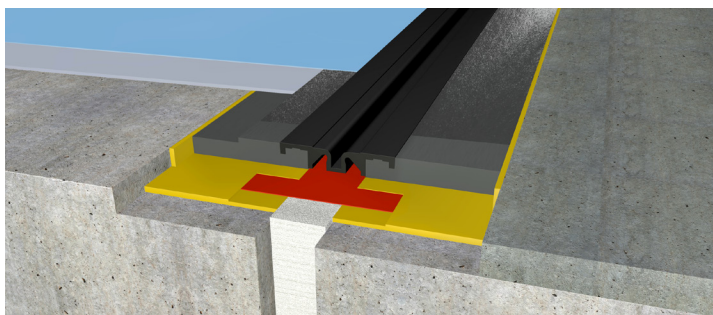
#### Asphalt structure

Our CPS Mono or CPS TD system is used for single-layer or multi-layer mastic asphalt structures. Mortar levelling underneath the joint profile depends on the height of the mastic asphalt structure.



#### CPS Duo

If different floor structures meet, our CPS Duo System is used (example: coating-mastic asphalt / coating-concrete).



# MOULDED PARTS

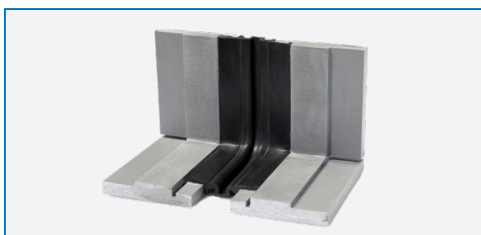
## Junctions, wall connections and other moulded parts.

These can be supplied prefabricated **according to requirements**.

Thanks to the adaptability of the individual profiles during installation, the **unique, flexible system design** also enables production of moulded parts individually on every construction site – suitable detailed solutions without extra costs and long-term planning in advance.



✓ CPS L-shaped part



✓ 90° CPS floor/wall moulded part



✓ CPS T-shaped part



✓ CPS cross-shaped part



✓ CPS wall connection profile



✓ Wall plate  
24 x 20 cm, item no. WP  
24 x 120 cm, item no. WP 24x120

# REFERENCES

## A small selection of our references in the multi-storey car park sector.

Take a look at our **small selection of successful projects** to get a **first impression** of our products in the multi-storey car park sector.





# SYSTEM PRODUCTS FROM FLOORBRIDGE®

## Composite adhesive



### Epoxy adhesive Connect 01/03

30 kg, item no. 122 / item no. 34  
9 kg, item no. 35 (Connect 03)



### Epoxy adhesive Connect 04

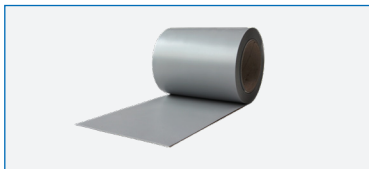
26 kg, item no. 147



### PMMA adhesive Connect 20

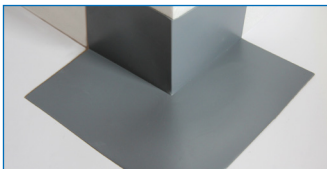
10 kg, item no. 198  
100 g, item no. 199, catalyst

## Sealing tape & accessories



### SM sealing tape

SM 150, 40 mm; item no. 33  
SM 200, 40 mm; item no. 69  
SM 500, 20 mm; item no. 135  
SM 700, 20 mm; item no. 138



### Outside corner

100 x 100 mm  
Item no. 71



### Inside corner

100 x 100 mm  
Item no. 72



### Junction

200 x 200 mm  
Item no. 119



### PU foam tape

20 x 10 mm, item no. 154

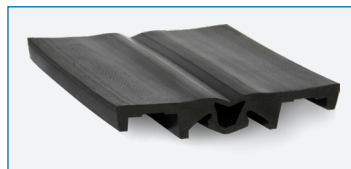


Wall connection for  
CPS profiles / item no. 102

## Rubber insert & accessories



Rubber insert for  
CPS 20/50 / item no. 100



Rubber insert for  
CPS 20/50 P / item no. 128



Rubber insert for  
CPS 20/80 / item no. 101



Inlay for rubber  
insert / item no. 124



EPDM elasto tape, 23 cm  
Width / item no. 169



Cleaner 12, 250 ml  
Item no. 9603900



Connect 12, 600 ml  
Item no. 3182121















Connect 13, 500 g  
Item no. 192

## Supplementary products

	 <p>Applying the protective film</p>	 <p>Sealing the joint profile</p>	 <p>Dirt brake (joint filler)</p> <p>Removing the protective film</p>
<p>✓ <b>Protective film for:</b></p> <ul style="list-style-type: none"> <li>- WGX 20/50, item no. SF10</li> <li>- ST 20/30, item no. SF5</li> <li>- RC 20/30, item no. SF5</li> <li>- AC 20/30, item no. SF5</li> <li>- SL 15/08, item no. SF7</li> <li>- SLX 15/10, item no. SF11</li> </ul>			
			
<p>✓ <b>Finish</b></p> <p>Transparent 2 x 1 kg, item no. 151 Colour approx. RAL 7001 2.5 kg, item no. 152</p>	<p>✓ <b>Screed insulation strips</b></p> <p>50 mm roll, item no. 129</p>	<p>✓ <b>Epoxy mortar 300</b></p> <p>14.5 kg set, item no. 166</p>	<p>✓ <b>75 mm adhesive tape</b></p> <p>Item no. 402-75</p>

## TOOLS FROM FLOORBRIDGE®

			
<p>✓ <b>30 cm installation templates</b></p> <p>10 cm for CPS 20/50 (TD), item no. 176 13 cm for CPS 20/80 (TD), item no. 177</p>	<p>✓ <b>2 m aluminium board</b></p> <p>Item no. 185</p>	<p>✓ <b>45 mm pressure roller</b></p> <p>Item no. P1-751</p>	<p>✓ <b>10 mm flat brush</b></p> <p>Item no. 172</p>
			
<p>✓ <b>SP 04 trowel</b></p> <p>Item no. 37</p>	<p>✓ <b>600 ml cartridge mastic gun</b></p> <p>Item no. G3-753006</p>	<p>✓ <b>2K power gun 400 ml</b></p> <p>Item no. 194</p>	<p>✓ <b>Mixing nozzle for Connect 13</b></p> <p>Item no. 193</p>
			
<p>✓ <b>Beam installation aid</b></p> <p>Item no. 183</p>	<p>✓ <b>Scale</b></p> <p>Item no. S15-PWS35</p>	<p>✓ <b>18 cm adhesive scraper</b></p> <p>B1 toothing Item no. D1-12019</p>	<p>✓ <b>Stucco spatula</b></p> <p>40 mm, item no. 184</p>





# FloorBridge®

Carbon Composite Joint Profiles

## HEADQUARTERS

FloorBridge® International GmbH

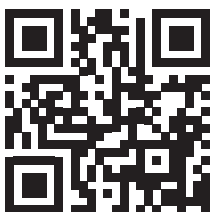
Gewerbepark 21

A-4101 Feldkirchen an der Donau

+43 7233 20 030

[office@floorbridge.com](mailto:office@floorbridge.com)

[www.floorbridge.com](http://www.floorbridge.com)



*Learn more about us!*

*Scan the QR code to visit our website.*